

UTF1 Antibody (Center L147)

Purified Rabbit Polyclonal Antibody (Pab)

Catalog # AP1411c

Product Information

Application	WB, E
Primary Accession	Q5T230
Reactivity	Human
Host	Rabbit
Clonality	Polyclonal
Isotype	Rabbit IgG
Clone Names	RB14073
Calculated MW	36439
Antigen Region	132-161

Additional Information

Gene ID	8433
Other Names	Undifferentiated embryonic cell transcription factor 1, UTF1 (HGNC:12634)
Target/Specificity	This UTF1 antibody is generated from rabbits immunized with a KLH conjugated synthetic peptide between 132-161 amino acids from the Central region of human UTF1.
Dilution	WB~~1:1000 E~~Use at an assay dependent concentration.
Format	Purified polyclonal antibody supplied in PBS with 0.09% (W/V) sodium azide. This antibody is prepared by Saturated Ammonium Sulfate (SAS) precipitation followed by dialysis against PBS.
Storage	Maintain refrigerated at 2-8°C for up to 2 weeks. For long term storage store at -20°C in small aliquots to prevent freeze-thaw cycles.
Precautions	UTF1 Antibody (Center L147) is for research use only and not for use in diagnostic or therapeutic procedures.

Protein Information

Name	UTF1 (HGNC:12634)
Function	Acts as a transcriptional coactivator of ATF2.
Cellular Location	Nucleus.

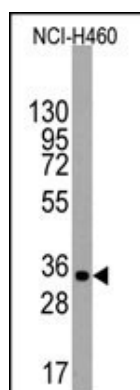
Background

UTF1 is a transcriptional coactivator expressed mainly in pluripotent embryonic stem cells.

References

Nishimoto,M., Biochem. Biophys. Res. Commun. 285 (4), 945-953 (2001)
Fukushima,A., J. Biol. Chem. 273 (40), 25840-25849 (1998)

Images



Western blot analysis of anti-UTF1 Antibody (Center L147) (RB14073) in NCI-H460 cell line lysates (35ug/lane). UTF1 (arrow) was detected using the purified Pab.

Please note: All products are 'FOR RESEARCH USE ONLY. NOT FOR USE IN DIAGNOSTIC OR THERAPEUTIC PROCEDURES'.