

PDIA5 Antibody (C-term)

Affinity Purified Rabbit Polyclonal Antibody (Pab)

Catalog # AP14120b

Product Information

Application	WB, E
Primary Accession	Q14554
Other Accession	NP_006801.1
Reactivity	Human
Host	Rabbit
Clonality	Polyclonal
Isotype	Rabbit IgG
Clone Names	RB34162
Calculated MW	59594
Antigen Region	488-517

Additional Information

Gene ID	10954
Other Names	Protein disulfide-isomerase A5, Protein disulfide isomerase-related protein, PDIA5, PDIR
Target/Specificity	This PDIA5 antibody is generated from rabbits immunized with a KLH conjugated synthetic peptide between 488-517 amino acids from the C-terminal region of human PDIA5.
Dilution	WB~~1:1000 E~~Use at an assay dependent concentration.
Format	Purified polyclonal antibody supplied in PBS with 0.09% (W/V) sodium azide. This antibody is purified through a protein A column, followed by peptide affinity purification.
Storage	Maintain refrigerated at 2-8°C for up to 2 weeks. For long term storage store at -20°C in small aliquots to prevent freeze-thaw cycles.
Precautions	PDIA5 Antibody (C-term) is for research use only and not for use in diagnostic or therapeutic procedures.

Protein Information

Name	PDIA5
Synonyms	PDIR
Cellular Location	Endoplasmic reticulum lumen {ECO:0000255 PROSITE- ProRule:PRU10138}

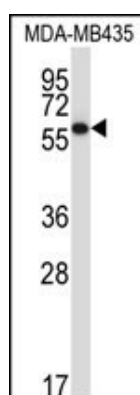
Background

PDIR (Protein disulfide isomerase related) are endoplasmic reticulum (ER) resident proteins that catalyze formation, reduction, and isomerization of disulfide bonds in proteins and are thought to play a role in folding of disulfide-bonded proteins.

References

Kozlov, G., et al. FEBS J. 277(19):3924-3936(2010)
Rose, J.E., et al. Mol. Med. 16 (7-8), 247-253 (2010) :
Wang, A.G., et al. Biochem. Biophys. Res. Commun. 345(3):1022-1032(2006)
Horibe, T., et al. J. Biol. Chem. 279(6):4604-4611(2004)
Hayano, T., et al. FEBS Lett. 372 (2-3), 210-214 (1995) :

Images



PDIA5 Antibody (C-term) (Cat. #AP14120b) western blot analysis in MDA-MB435 cell line lysates (35ug/lane). This demonstrates the PDIA5 antibody detected the PDIA5 protein (arrow).

Please note: All products are 'FOR RESEARCH USE ONLY. NOT FOR USE IN DIAGNOSTIC OR THERAPEUTIC PROCEDURES'.