

# Mouse Csnk1g1 Antibody (C-term)

Affinity Purified Rabbit Polyclonal Antibody (Pab)

Catalog # AP14134b

## Product Information

---

<b>Application</b>	WB, IHC-P, E
<b>Primary Accession</b>	<a href="#">Q8BTH8</a>
<b>Other Accession</b>	<a href="#">A7E3X2</a> , <a href="#">NP_775277.2</a>
<b>Reactivity</b>	Mouse
<b>Predicted</b>	Bovine
<b>Host</b>	Rabbit
<b>Clonality</b>	Polyclonal
<b>Isotype</b>	Rabbit IgG
<b>Clone Names</b>	RB34463
<b>Calculated MW</b>	52744
<b>Antigen Region</b>	359-387

## Additional Information

---

<b>Gene ID</b>	214897
<b>Other Names</b>	Casein kinase I isoform gamma-1, CKI-gamma 1, Csnk1g1
<b>Target/Specificity</b>	This Mouse Csnk1g1 antibody is generated from rabbits immunized with a KLH conjugated synthetic peptide between 359-387 amino acids from the C-terminal region of mouse Csnk1g1.
<b>Dilution</b>	WB~~1:1000 IHC-P~~1:100~500 E~~Use at an assay dependent concentration.
<b>Format</b>	Purified polyclonal antibody supplied in PBS with 0.09% (W/V) sodium azide. This antibody is purified through a protein A column, followed by peptide affinity purification.
<b>Storage</b>	Maintain refrigerated at 2-8°C for up to 2 weeks. For long term storage store at -20°C in small aliquots to prevent freeze-thaw cycles.
<b>Precautions</b>	Mouse Csnk1g1 Antibody (C-term) is for research use only and not for use in diagnostic or therapeutic procedures.

## Protein Information

---

<b>Name</b>	Csnk1g1
<b>Function</b>	Serine/threonine-protein kinase. Casein kinases are operationally defined by their preferential utilization of acidic proteins such as caseins as substrates. It can phosphorylate a large number of proteins. Participates in

Wnt signaling. Phosphorylates CLSPN (By similarity). Regulates fast synaptic transmission mediated by glutamate.

**Cellular Location** Cytoplasm.

**Tissue Location** Expressed in both the striatum and the neocortex.

## Background

---

Casein kinases are operationally defined by their preferential utilization of acidic proteins such as caseins as substrates. It can phosphorylate a large number of proteins. Participates in Wnt signaling (By similarity).

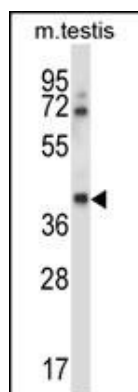
## References

---

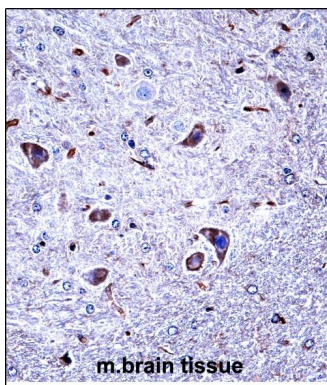
Chergui, K., et al. J. Neurosci. 25(28):6601-6609(2005)  
Zambrowicz, B.P., et al. Proc. Natl. Acad. Sci. U.S.A. 100(24):14109-14114(2003)  
Stryke, D., et al. Nucleic Acids Res. 31(1):278-281(2003)  
Fujimoto, S., et al. Nucleic Acids Res. 21 (18), 4403 (1993) :

## Images

---



Mouse Csnk1g1 Antibody (C-term) (Cat. #AP14134b) western blot analysis in mouse testis tissue lysates (35ug/lane). This demonstrates the Csnk1g1 antibody detected the Csnk1g1 protein (arrow).



Mouse Csnk1g1 Antibody (C-term) (AP14134b) immunohistochemistry analysis in formalin fixed and paraffin embedded mouse brain tissue followed by peroxidase conjugation of the secondary antibody and DAB staining. This data demonstrates the use of Mouse Csnk1g1 Antibody (C-term) for immunohistochemistry. Clinical relevance has not been evaluated.

## Citations

---

- [Jumonji Domain Containing 5 \(JMJD5\) Associates with Spindle Microtubules and Is Required for Proper Mitosis.](#)