

Mouse Mst1r Antibody (C-term)

Affinity Purified Rabbit Polyclonal Antibody (Pab)

Catalog # AP14137B

Product Information

Application	IHC-P, WB, E
Primary Accession	Q62190
Reactivity	Mouse
Host	Rabbit
Clonality	Polyclonal
Isotype	Rabbit IgG
Clone Names	RB34642
Calculated MW	150519
Antigen Region	1013-1041

Additional Information

Gene ID	19882
Other Names	Macrophage-stimulating protein receptor, MSP receptor, Stem cell-derived tyrosine kinase, p185-Ron, CD136, Macrophage-stimulating protein receptor alpha chain, Macrophage-stimulating protein receptor beta chain, Mst1r, Ron, Stk
Target/Specificity	This Mouse Mst1r antibody is generated from rabbits immunized with a KLH conjugated synthetic peptide between 1013-1041 amino acids from the C-terminal region of mouse Mst1r.
Dilution	IHC-P~~1:100~500 WB~~1:1000 E~~Use at an assay dependent concentration.
Format	Purified polyclonal antibody supplied in PBS with 0.09% (W/V) sodium azide. This antibody is purified through a protein A column, followed by peptide affinity purification.
Storage	Maintain refrigerated at 2-8°C for up to 2 weeks. For long term storage store at -20°C in small aliquots to prevent freeze-thaw cycles.
Precautions	Mouse Mst1r Antibody (C-term) is for research use only and not for use in diagnostic or therapeutic procedures.

Protein Information

Name	Mst1r
Synonyms	Ron, Stk

Function

Receptor tyrosine kinase that transduces signals from the extracellular matrix into the cytoplasm by binding to MST1 ligand. Regulates many physiological processes including cell survival, migration and differentiation. Ligand binding at the cell surface induces autophosphorylation of RON on its intracellular domain that provides docking sites for downstream signaling molecules. Following activation by ligand, interacts with the PI3-kinase subunit PIK3R1, PLCG1 or the adapter GAB1. Recruitment of these downstream effectors by RON leads to the activation of several signaling cascades including the RAS-ERK, PI3 kinase-AKT, or PLCgamma-PKC. RON signaling activates the wound healing response by promoting epithelial cell migration, proliferation as well as survival at the wound site. Also plays a role in the innate immune response by regulating the migration and phagocytic activity of macrophages. Alternatively, RON can also promote signals such as cell migration and proliferation in response to growth factors other than MST1 ligand.

Cellular Location

Membrane; Single-pass type I membrane protein.

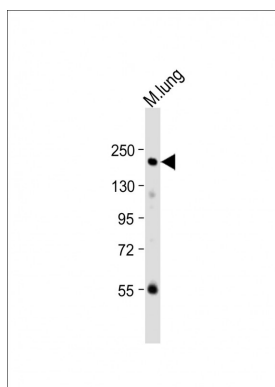
Tissue Location

Expressed in liver, skin, lung, brain, testis and kidney.

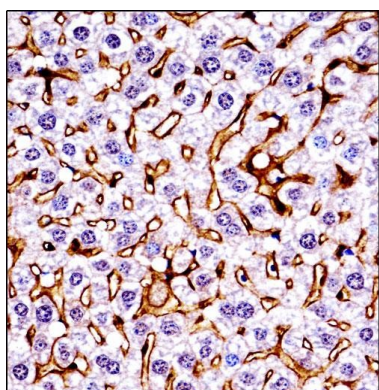
Background

Receptor for macrophage stimulating protein (MSP). Has a tyrosine-protein kinase activity.

Images



Anti-Mouse Mst1r Antibody (C-term) at 1:1000 dilution + mouse lung lysate Lysates/proteins at 20 µg per lane. Secondary Goat Anti-Rabbit IgG, (H+L), Peroxidase conjugated at 1/10000 dilution. Predicted band size : 151 kDa Blocking/Dilution buffer: 5% NFDM/TBST.



Mouse Mst1r Antibody (C-term) (AP14137b) immunohistochemistry analysis in formalin fixed and paraffin embedded mouse live tissue followed by peroxidase conjugation of the secondary antibody and DAB staining. This data demonstrates the use of Mouse Mst1r Antibody (C-term) for immunohistochemistry. Clinical relevance has not been evaluated.

Please note: All products are 'FOR RESEARCH USE ONLY. NOT FOR USE IN DIAGNOSTIC OR THERAPEUTIC PROCEDURES'.