

CD8A Antibody (N-term)

Affinity Purified Rabbit Polyclonal Antibody (Pab)

Catalog # AP1414a

Product Information

Application	WB, IHC-P, E
Primary Accession	P01732
Reactivity	Human
Host	Rabbit
Clonality	Polyclonal
Isotype	Rabbit IgG
Clone Names	RB13990
Calculated MW	25729
Antigen Region	59-88

Additional Information

Gene ID	925
Other Names	T-cell surface glycoprotein CD8 alpha chain, T-lymphocyte differentiation antigen T8/Leu-2, CD8a, CD8A, MAL
Target/Specificity	This CD8A antibody is generated from rabbits immunized with a KLH conjugated synthetic peptide between 59-88 amino acids from the N-terminal region of human CD8A.
Dilution	WB~~1:1000 IHC-P~~1:100~500 E~~Use at an assay dependent concentration.
Format	Purified polyclonal antibody supplied in PBS with 0.09% (W/V) sodium azide. This antibody is purified through a protein A column, followed by peptide affinity purification.
Storage	Maintain refrigerated at 2-8°C for up to 2 weeks. For long term storage store at -20°C in small aliquots to prevent freeze-thaw cycles.
Precautions	CD8A Antibody (N-term) is for research use only and not for use in diagnostic or therapeutic procedures.

Protein Information

Name	CD8A
Synonyms	MAL
Function	Integral membrane glycoprotein that plays an essential role in the immune response and serves multiple functions in responses against both external

and internal offenses. In T-cells, functions primarily as a coreceptor for MHC class I molecule:peptide complex. The antigens presented by class I peptides are derived from cytosolic proteins while class II derived from extracellular proteins. Interacts simultaneously with the T-cell receptor (TCR) and the MHC class I proteins presented by antigen presenting cells (APCs). In turn, recruits the Src kinase LCK to the vicinity of the TCR-CD3 complex. LCK then initiates different intracellular signaling pathways by phosphorylating various substrates ultimately leading to lymphokine production, motility, adhesion and activation of cytotoxic T- lymphocytes (CTLs). This mechanism enables CTLs to recognize and eliminate infected cells and tumor cells. In NK-cells, the presence of CD8A homodimers at the cell surface provides a survival mechanism allowing conjugation and lysis of multiple target cells. CD8A homodimer molecules also promote the survival and differentiation of activated lymphocytes into memory CD8 T-cells.

Cellular Location

[Isoform 1]: Cell membrane; Single-pass type I membrane protein Note=CD8A localizes to lipid rafts only when associated with its partner CD8B.

Tissue Location

CD8 on thymus-derived T-cells usually consists of a disulfide-linked alpha/CD8A and a beta/CD8B chain. Less frequently, CD8 can be expressed as a CD8A homodimer. A subset of natural killer cells, memory T-cells, intraepithelial lymphocytes, monocytes and dendritic cells expresses CD8A homodimers. Expressed at the cell surface of plasmacytoid dendritic cells upon herpes simplex virus-1 stimulation

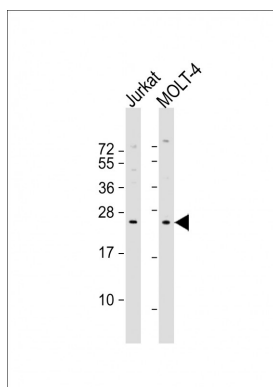
Background

The CD8 antigen is a cell surface glycoprotein found on most cytotoxic T lymphocytes that mediates efficient cell-cell interactions within the immune system. The CD8 antigen, acting as a coreceptor, and the T-cell receptor on the T lymphocyte recognize antigen displayed by an antigen presenting cell (APC) in the context of class I MHC molecules. The functional coreceptor is either a homodimer composed of two alpha chains, or a heterodimer composed of one alpha and one beta chain. Both alpha and beta chains share significant homology to immunoglobulin variable light chains.

References

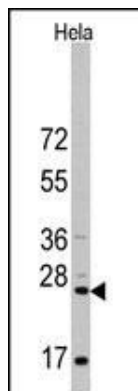
Mancebo,E., Mol. Immunol. 45 (2), 479-484 (2008)
 Zhou,H., Transplant. Proc. 39 (10), 3065-3067 (2007)
 Borchers,M.T., Exp. Mol. Pathol. 83 (3), 301-310 (2007)

Images

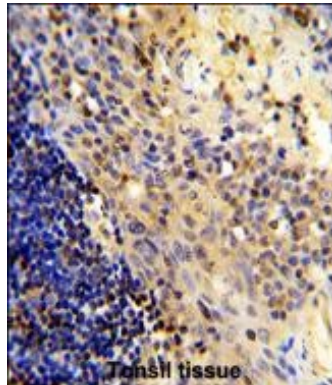


All lanes : Anti-CD8A Antibody (N-term) at 1:1000 dilution
 Lane 1: Jurkat whole cell lysate Lane 2: MOLT-4 whole cell lysate
 Lysates/proteins at 20 µg per lane. Secondary Goat Anti-Rabbit IgG, (H+L), Peroxidase conjugated at 1/10000 dilution. Predicted band size : 26 kDa
 Blocking/Dilution buffer: 5% NFDm/TBST.

Western blot analysis of anti-CD8A Antibody (N-term)



(Cat.#AP1414a) in HeLa cell line lysates (35ug/lane). CD8A(arrow) was detected using the purified Pab.



Formalin-fixed and paraffin-embedded human tonsil tissue reacted with CD8A Antibody (N-term), which was peroxidase-conjugated to the secondary antibody, followed by DAB staining. This data demonstrates the use of this antibody for immunohistochemistry; clinical relevance has not been evaluated.

Citations

- [Tumour and immune cell dynamics explain the PSA bounce after prostate cancer brachytherapy.](#)

Please note: All products are 'FOR RESEARCH USE ONLY. NOT FOR USE IN DIAGNOSTIC OR THERAPEUTIC PROCEDURES'.