

# Mouse Mlk4 Antibody (Center)

Affinity Purified Rabbit Polyclonal Antibody (Pab)

Catalog # AP14157c

## Product Information

---

<b>Application</b>	WB, IHC-P, E
<b>Primary Accession</b>	<a href="#">Q8VDG6</a>
<b>Other Accession</b>	<a href="#">NP_663583.2</a>
<b>Reactivity</b>	Human, Mouse
<b>Host</b>	Rabbit
<b>Clonality</b>	Polyclonal
<b>Isotype</b>	Rabbit IgG
<b>Clone Names</b>	RB34841
<b>Calculated MW</b>	110112
<b>Antigen Region</b>	566-593

## Additional Information

---

<b>Gene ID</b>	234878
<b>Other Names</b>	Mitogen-activated protein kinase kinase kinase MLK4, Mixed lineage kinase 4, Mlk4, Kiaa1804
<b>Target/Specificity</b>	This Mouse Mlk4 antibody is generated from rabbits immunized with a KLH conjugated synthetic peptide between 566-593 amino acids from the Central region of mouse Mlk4.
<b>Dilution</b>	WB~~1:1000 IHC-P~~1:100~500 E~~Use at an assay dependent concentration.
<b>Format</b>	Purified polyclonal antibody supplied in PBS with 0.09% (W/V) sodium azide. This antibody is purified through a protein A column, followed by peptide affinity purification.
<b>Storage</b>	Maintain refrigerated at 2-8°C for up to 2 weeks. For long term storage store at -20°C in small aliquots to prevent freeze-thaw cycles.
<b>Precautions</b>	Mouse Mlk4 Antibody (Center) is for research use only and not for use in diagnostic or therapeutic procedures.

## Protein Information

---

<b>Name</b>	Map3k21
<b>Synonyms</b>	Kiaa1804, Mlk4
<b>Function</b>	Negative regulator of TLR4 signaling. Does not activate JNK1/MAPK8

pathway, p38/MAPK14, nor ERK2/MAPK1 pathways (By similarity).

## Background

---

Mrk4 activates the JUN N-terminal pathway (By similarity).

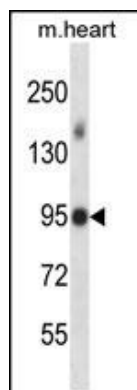
## References

---

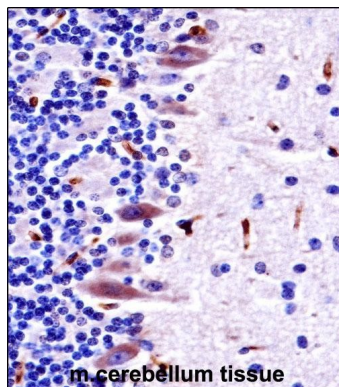
Katayama, S., et al. Science 309(5740):1564-1566(2005)

## Images

---



Mouse Mrk4 Antibody (Center) (Cat. #AP14157c) western blot analysis in mouse heart tissue lysates (35ug/lane). This demonstrates the Mrk4 antibody detected the Mrk4 protein (arrow).



Mouse Mrk4 Antibody (Center) (AP14157c) immunohistochemistry analysis in formalin fixed and paraffin embedded mouse cerebellum tissue followed by peroxidase conjugation of the secondary antibody and DAB staining. This data demonstrates the use of Mouse Mrk4 Antibody (Center) for immunohistochemistry. Clinical relevance has not been evaluated.

Please note: All products are 'FOR RESEARCH USE ONLY. NOT FOR USE IN DIAGNOSTIC OR THERAPEUTIC PROCEDURES'.