

## UBP46 Antibody (C-term)

Affinity Purified Rabbit Polyclonal Antibody (Pab)

Catalog # AP14161b

### Product Information

---

<b>Application</b>	WB, E
<b>Primary Accession</b>	<a href="#">P62068</a>
<b>Other Accession</b>	<a href="#">P62069</a> , <a href="#">A5WWB0</a> , <a href="#">NP_001127695.1</a> , <a href="#">NP_073743.2</a>
<b>Reactivity</b>	Human
<b>Predicted</b>	Zebrafish, Mouse
<b>Host</b>	Rabbit
<b>Clonality</b>	Polyclonal
<b>Isotype</b>	Rabbit IgG
<b>Clone Names</b>	RB34879
<b>Calculated MW</b>	42442
<b>Antigen Region</b>	241-269

### Additional Information

---

<b>Gene ID</b>	64854
<b>Other Names</b>	Ubiquitin carboxyl-terminal hydrolase 46, Deubiquitinating enzyme 46, Ubiquitin thioesterase 46, Ubiquitin-specific-processing protease 46, USP46
<b>Target/Specificity</b>	This UBP46 antibody is generated from rabbits immunized with a KLH conjugated synthetic peptide between 241-269 amino acids from the C-terminal region of human UBP46.
<b>Dilution</b>	WB~~1:1000 E~~Use at an assay dependent concentration.
<b>Format</b>	Purified polyclonal antibody supplied in PBS with 0.09% (W/V) sodium azide. This antibody is purified through a protein A column, followed by peptide affinity purification.
<b>Storage</b>	Maintain refrigerated at 2-8°C for up to 2 weeks. For long term storage store at -20°C in small aliquots to prevent freeze-thaw cycles.
<b>Precautions</b>	UBP46 Antibody (C-term) is for research use only and not for use in diagnostic or therapeutic procedures.

### Protein Information

---

<b>Name</b>	USP46
<b>Function</b>	Deubiquitinating enzyme that plays a role in behavior, possibly by regulating GABA action. May act by mediating the deubiquitination of

GAD1/GAD67 (By similarity). Has almost no deubiquitinating activity by itself and requires the interaction with WDR48 to have a high activity (PubMed:[19075014](#), PubMed:[26388029](#)). Not involved in deubiquitination of monoubiquitinated FANCD2 (PubMed:[19075014](#)).

**Cellular Location** Cytoplasm. Note=USP46/WDR48/WDR20 complex is predominantly cytoplasmic

**Tissue Location** Broadly expressed..

## Background

---

Modification of cellular proteins by ubiquitin is an essential regulatory mechanism controlled by the coordinated action of multiple ubiquitin-conjugating and deubiquitinating enzymes. USP46 belongs to a large family of cysteine proteases that function as deubiquitinating enzymes (Quesada et al., 2004 [PubMed 14715245]).

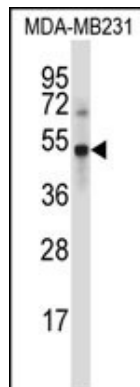
## References

---

Kushima, I., et al. J. Hum. Genet. 55(3):133-136(2010)  
Cohn, M.A., et al. J. Biol. Chem. 284(8):5343-5351(2009)  
Zemunik, T., et al. Croat. Med. J. 50(1):23-33(2009)  
Quesada, V., et al. Biochem. Biophys. Res. Commun. 314(1):54-62(2004)  
Puente, X.S., et al. Nat. Rev. Genet. 4(7):544-558(2003)

## Images

---



UBP46 Antibody (C-term) (Cat. #AP14161b) western blot analysis in MDA-MB231 cell line lysates (35ug/lane). This demonstrates the UBP46 antibody detected the UBP46 protein (arrow).

Please note: All products are 'FOR RESEARCH USE ONLY. NOT FOR USE IN DIAGNOSTIC OR THERAPEUTIC PROCEDURES'.