

CHRD Antibody (N-term)

Affinity Purified Rabbit Polyclonal Antibody (Pab)

Catalog # AP1416a

Product Information

Application	WB, IHC-P, E
Primary Accession	Q9H2X0
Reactivity	Human
Host	Rabbit
Clonality	Polyclonal
Isotype	Rabbit IgG
Clone Names	RB14094
Calculated MW	102032
Antigen Region	137-167

Additional Information

Gene ID	8646
Other Names	Chordin, CHRD
Target/Specificity	This CHRD antibody is generated from rabbits immunized with a KLH conjugated synthetic peptide between 137-167 amino acids from the N-terminal region of human CHRD.
Dilution	WB~~1:1000 IHC-P~~1:100~500 E~~Use at an assay dependent concentration.
Format	Purified polyclonal antibody supplied in PBS with 0.09% (W/V) sodium azide. This antibody is prepared by Saturated Ammonium Sulfate (SAS) precipitation followed by dialysis against PBS.
Storage	Maintain refrigerated at 2-8°C for up to 2 weeks. For long term storage store at -20°C in small aliquots to prevent freeze-thaw cycles.
Precautions	CHRD Antibody (N-term) is for research use only and not for use in diagnostic or therapeutic procedures.

Protein Information

Name	CHRD
Function	Dorsalizing factor. Key developmental protein that dorsalizes early vertebrate embryonic tissues by binding to ventralizing TGF-beta family bone morphogenetic proteins (BMPs) and sequestering them in latent complexes (By similarity).

Cellular Location	Secreted.
Tissue Location	Expressed at the highest level in liver.

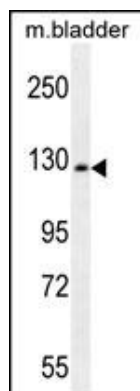
Background

CHRD is a secreted protein that dorsalizes early vertebrate embryonic tissues by binding to ventralizing TGF-beta-like bone morphogenetic proteins and sequestering them in latent complexes. This protein may also have roles in organogenesis and during adulthood.

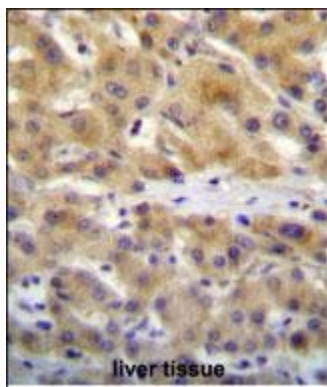
References

Lim,J., Cell 125 (4), 801-814 (2006)
Moll,F., FASEB J. 20 (2), 240-250 (2006)

Images



CHRD Antibody (N-term) (Cat.#AP1416a) western blot analysis in mouse bladder tissue lysates (35ug/lane).This demonstrates the CHRD antibody detected the CHRD protein (arrow).



CHRD Antibody (N-term) (Cat. #AP1416a)immunohistochemistry analysis in formalin fixed and paraffin embedded human liver tissue followed by peroxidase conjugation of the secondary antibody and DAB staining.This data demonstrates the use of CHRD Antibody (N-term) for immunohistochemistry. Clinical relevance has not been evaluated.

Citations

- [Chordin and noggin expression in the adult rat trigeminal nuclei.](#)

Please note: All products are 'FOR RESEARCH USE ONLY. NOT FOR USE IN DIAGNOSTIC OR THERAPEUTIC PROCEDURES'.