

# CHRD Antibody (C-term)

Affinity Purified Rabbit Polyclonal Antibody (Pab)

Catalog # AP1416b

## Product Information

---

<b>Application</b>	WB, IHC-P, E
<b>Primary Accession</b>	<a href="#">Q9H2X0</a>
<b>Reactivity</b>	Human
<b>Host</b>	Rabbit
<b>Clonality</b>	Polyclonal
<b>Isotype</b>	Rabbit IgG
<b>Calculated MW</b>	102032
<b>Antigen Region</b>	926-955

## Additional Information

---

<b>Gene ID</b>	8646
<b>Other Names</b>	Chordin, CHRD
<b>Target/Specificity</b>	This CHRD antibody is generated from rabbits immunized with a KLH conjugated synthetic peptide between 926-955 amino acids from the C-terminal region of human CHRD.
<b>Dilution</b>	WB~~1:1000 IHC-P~~1:100~500 E~~Use at an assay dependent concentration.
<b>Format</b>	Purified polyclonal antibody supplied in PBS with 0.09% (W/V) sodium azide. This antibody is purified through a protein A column, followed by peptide affinity purification.
<b>Storage</b>	Maintain refrigerated at 2-8°C for up to 2 weeks. For long term storage store at -20°C in small aliquots to prevent freeze-thaw cycles.
<b>Precautions</b>	CHRD Antibody (C-term) is for research use only and not for use in diagnostic or therapeutic procedures.

## Protein Information

---

<b>Name</b>	CHRD
<b>Function</b>	Dorsalizing factor. Key developmental protein that dorsalizes early vertebrate embryonic tissues by binding to ventralizing TGF-beta family bone morphogenetic proteins (BMPs) and sequestering them in latent complexes (By similarity).
<b>Cellular Location</b>	Secreted.

## Tissue Location

Expressed at the highest level in liver.

## Background

---

CHRD is a secreted protein that dorsalizes early vertebrate embryonic tissues by binding to ventralizing TGF-beta-like bone morphogenetic proteins and sequestering them in latent complexes. This protein may also have roles in organogenesis and during adulthood.

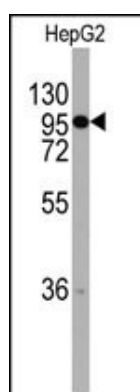
## References

---

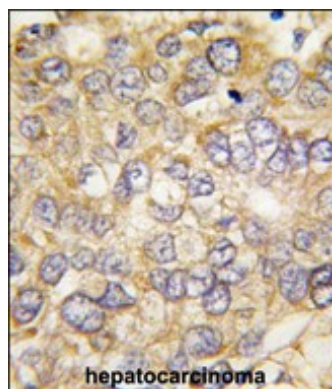
Lim,J., Cell 125 (4), 801-814 (2006)  
Moll,F., FASEB J. 20 (2), 240-250 (2006)

## Images

---



Western blot analysis of anti-CHRD Antibody (C-term) (RB14089) in HepG2 cell line lysates (35ug/lane). CHRD (arrow) was detected using the purified Pab.



Formalin-fixed and paraffin-embedded human hepatocarcinoma tissue reacted with CHRD antibody (C-term) (Cat.#AP1416b), which was peroxidase-conjugated to the secondary antibody, followed by DAB staining. This data demonstrates the use of this antibody for immunohistochemistry; clinical relevance has not been evaluated.

Please note: All products are 'FOR RESEARCH USE ONLY. NOT FOR USE IN DIAGNOSTIC OR THERAPEUTIC PROCEDURES'.