

PSCA Antibody (Center)

Purified Rabbit Polyclonal Antibody (Pab)

Catalog # AP1419c

Product Information

Application	WB, IHC-P, E
Primary Accession	O43653
Reactivity	Human, Mouse
Host	Rabbit
Clonality	Polyclonal
Isotype	Rabbit IgG
Calculated MW	11959
Antigen Region	56-85

Additional Information

Gene ID	8000
Other Names	Prostate stem cell antigen, PSCA
Target/Specificity	This PSCA antibody is generated from rabbits immunized with a KLH conjugated synthetic peptide between 56-85 amino acids from the Central region of human PSCA.
Dilution	WB~~1:1000 IHC-P~~1:100~500 E~~Use at an assay dependent concentration.
Format	Purified polyclonal antibody supplied in PBS with 0.05% (V/V) Proclin 300. This antibody is purified through a protein A column, followed by peptide affinity purification.
Storage	Maintain refrigerated at 2-8°C for up to 2 weeks. For long term storage store at -20°C in small aliquots to prevent freeze-thaw cycles.
Precautions	PSCA Antibody (Center) is for research use only and not for use in diagnostic or therapeutic procedures.

Protein Information

Name	PSCA
Function	May be involved in the regulation of cell proliferation. Has a cell-proliferation inhibition activity in vitro.
Cellular Location	Cell membrane; Lipid-anchor, GPI-anchor
Tissue Location	Highly expressed in prostate (basal, secretory and neuroendocrine epithelium

cells). Also found in bladder (transitional epithelium), placenta (trophoblasts), stomach (neuroendocrine cells), colon (neuroendocrine cells) and kidney (collecting ducts) Overexpressed in prostate cancers and expression is correlated with tumor stage, grade and androgen-independence. Highly expressed in prostate cancer bone metastases. Expressed in gastric epithelial cells, mainly in the isthmus (at protein level). Not detected in normal intestinal epithelium (at protein level). Expressed in brain cortex; expression is significantly increased in the front cortex of Alzheimer disease patients.

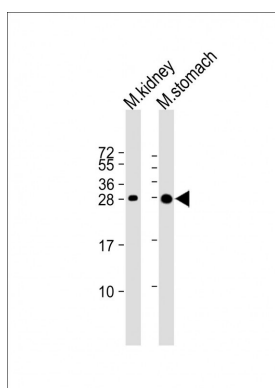
Background

PSCA is a glycosylphosphatidylinositol-anchored cell membrane glycoprotein. In addition to being highly expressed in the prostate it is also expressed in the bladder, placenta, colon, kidney, and stomach. It is up-regulated in a large proportion of prostate cancers and is also detected in cancers of the bladder and pancreas.

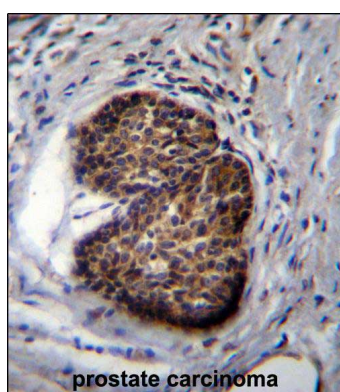
References

Zhigang,Z., Prostate 68 (2), 190-199 (2008)
Zhigang,Z., Prostate 67 (11), 1143-1151 (2007)

Images



All lanes : Anti-PSCA Antibody (Center) at 1:1000-1:2000 dilution Lane 1: Mouse kidney lysate Lane 2: Mouse stomach lysate Lysates/proteins at 20 µg per lane. Secondary Goat Anti-Rabbit IgG, (H+L), Peroxidase conjugated at 1/10000 dilution. Predicted band size : 12 kDa Blocking/Dilution buffer: 5% NFDM/TBST.



PSCA Antibody (Center) (Cat. #AP1419c) immunohistochemistry analysis in formalin fixed and paraffin embedded human prostate carcinoma followed by peroxidase conjugation of the secondary antibody and DAB staining. This data demonstrates the use of PSCA Antibody (Center) for immunohistochemistry. Clinical relevance has not been evaluated.

Please note: All products are 'FOR RESEARCH USE ONLY. NOT FOR USE IN DIAGNOSTIC OR THERAPEUTIC PROCEDURES'.