

PRSS8 Antibody (Center)

Affinity Purified Rabbit Polyclonal Antibody (Pab)

Catalog # AP14207c

Product Information

Application	WB, E
Primary Accession	Q16651
Other Accession	NP_002764.1
Reactivity	Human
Host	Rabbit
Clonality	Polyclonal
Isotype	Rabbit IgG
Clone Names	RB34113
Calculated MW	36431
Antigen Region	190-219

Additional Information

Gene ID	5652
Other Names	Prostasin, 3421-, Channel-activating protease 1, CAP1, Serine protease 8, Prostasin light chain, Prostasin heavy chain, PRSS8
Target/Specificity	This PRSS8 antibody is generated from rabbits immunized with a KLH conjugated synthetic peptide between 190-219 amino acids from the Central region of human PRSS8.
Dilution	WB~~1:1000 E~~Use at an assay dependent concentration.
Format	Purified polyclonal antibody supplied in PBS with 0.09% (W/V) sodium azide. This antibody is purified through a protein A column, followed by peptide affinity purification.
Storage	Maintain refrigerated at 2-8°C for up to 2 weeks. For long term storage store at -20°C in small aliquots to prevent freeze-thaw cycles.
Precautions	PRSS8 Antibody (Center) is for research use only and not for use in diagnostic or therapeutic procedures.

Protein Information

Name	PRSS8
Function	Possesses a trypsin-like cleavage specificity with a preference for poly-basic substrates. Stimulates epithelial sodium channel (ENaC) activity through activating cleavage of the gamma subunits (SCNN1G).

Cellular Location	[Prostasin]: Cell membrane; Single-pass membrane protein [Prostasin heavy chain]: Secreted, extracellular space. Note=Found in the seminal fluid. Secreted after cleavage of its C-terminus
Tissue Location	Found in prostate, liver, salivary gland, kidney, lung, pancreas, colon, bronchus and renal proximal tubular cells. In the prostate gland it may be synthesized in epithelial cells, secreted into the ducts, and excreted into the seminal fluid

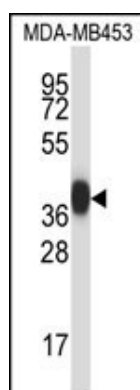
Background

This gene encodes a trypsinogen, which is a member of the trypsin family of serine proteases. This enzyme is highly expressed in prostate epithelia and is one of several proteolytic enzymes found in seminal fluid. The proprotein is cleaved to produce a light chain and a heavy chain which are associated by a disulfide bond. It is active on peptide linkages involving the carboxyl group of lysine or arginine.

References

Chen, Y.W., et al. J. Biol. Chem. 285(41):31755-31762(2010)
Chen, M., et al. Mol. Cell. Biochem. 337 (1-2), 259-266 (2010) :
Fu, Y.Y., et al. Hum. Reprod. 25(3):623-632(2010)
Ko, T., et al. J. Biomed. Biotechnol. 2010, 793843 (2010) :
Chang, J.H., et al. Zhongguo Yi Xue Ke Xue Yuan Xue Bao 31(6):712-719(2009)

Images



PRSS8 Antibody (Center) (Cat. #AP14207c) western blot analysis in MDA-MB453 cell line lysates (35ug/lane). This demonstrates the PRSS8 antibody detected the PRSS8 protein (arrow).

Please note: All products are 'FOR RESEARCH USE ONLY. NOT FOR USE IN DIAGNOSTIC OR THERAPEUTIC PROCEDURES'.