

# MCPH1 Antibody (N-term)

Affinity Purified Rabbit Polyclonal Antibody (Pab)

Catalog # AP14216a

## Product Information

---

Application	WB, E
Primary Accession	<a href="#">Q8NEM0</a>
Other Accession	<a href="#">Q5IFK1</a> , <a href="#">NP_078872.2</a> , <a href="#">NP_001166045.1</a>
Reactivity	Human
Predicted	Monkey
Host	Rabbit
Clonality	Polyclonal
Isotype	Rabbit IgG
Clone Names	RB34189
Calculated MW	92849
Antigen Region	104-133

## Additional Information

---

Gene ID	79648
Other Names	Microcephalin, MCPH1
Target/Specificity	This MCPH1 antibody is generated from rabbits immunized with a KLH conjugated synthetic peptide between 104-133 amino acids from the N-terminal region of human MCPH1.
Dilution	WB~~1:1000 E~~Use at an assay dependent concentration.
Format	Purified polyclonal antibody supplied in PBS with 0.09% (W/V) sodium azide. This antibody is purified through a protein A column, followed by peptide affinity purification.
Storage	Maintain refrigerated at 2-8°C for up to 2 weeks. For long term storage store at -20°C in small aliquots to prevent freeze-thaw cycles.
Precautions	MCPH1 Antibody (N-term) is for research use only and not for use in diagnostic or therapeutic procedures.

## Protein Information

---

Name	MCPH1 ( <a href="#">HGNC:6954</a> )
Function	Implicated in chromosome condensation and DNA damage induced cellular responses. May play a role in neurogenesis and regulation of the size of the cerebral cortex.

<b>Cellular Location</b>	Cytoplasm, cytoskeleton, microtubule organizing center, centrosome
<b>Tissue Location</b>	Expressed in fetal brain, liver and kidney.

## Background

---

This gene encodes a DNA damage response protein. The encoded protein may play a role in G2/M checkpoint arrest via maintenance of inhibitory phosphorylation of cyclin-dependent kinase 1. Mutations in this gene have been associated with primary autosomal recessive microcephaly 1 and premature chromosome condensation syndrome. Alternatively spliced transcript variants have been described.

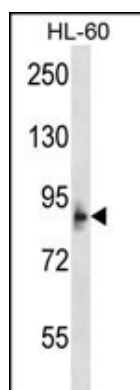
## References

---

Wang, Y., et al. J. Hum. Genet. 55(8):490-494(2010)  
 Ruano, G., et al. Pharmacogenomics 11(7):959-971(2010)  
 Rose, J.E., et al. Mol. Med. 16 (7-8), 247-253 (2010) :  
 Olson, J.E., et al. Breast Cancer Res. Treat. (2010) In press :  
 Wang, Y.Q., et al. Hum. Mol. Genet. 13(11):1131-1137(2004)

## Images

---



MCPH1 Antibody (N-term) (Cat. #AP14216a) western blot analysis in HL-60 cell line lysates (35ug/lane). This demonstrates the MCPH1 antibody detected the MCPH1 protein (arrow).

Please note: All products are 'FOR RESEARCH USE ONLY. NOT FOR USE IN DIAGNOSTIC OR THERAPEUTIC PROCEDURES'.