

# DRAGON (RGMB) Antibody (C-term)

Purified Rabbit Polyclonal Antibody (Pab)

Catalog # AP1421b

## Product Information

---

Application	IHC-P, WB, E
Primary Accession	<a href="#">Q6NW40</a>
Other Accession	<a href="#">Q7TQ33</a>
Reactivity	Human, Mouse
Host	Rabbit
Clonality	Polyclonal
Isotype	Rabbit IgG
Clone Names	RB08951
Calculated MW	47547
Antigen Region	376-406

## Additional Information

---

Gene ID	285704
Other Names	RGM domain family member B, DRG11-responsive axonal guidance and outgrowth of neurite, DRAGON, RGMB
Target/Specificity	This DRAGON (RGMB) antibody is generated from rabbits immunized with a KLH conjugated synthetic peptide between 376-406 amino acids from the C-terminal region of human DRAGON (RGMB).
Dilution	IHC-P~~1:100~500 WB~~1:2000 E~~Use at an assay dependent concentration.
Format	Purified monoclonal antibody supplied in PBS with 0.09% (W/V) sodium azide. This antibody is purified through a protein G column, followed by dialysis against PBS.
Storage	Maintain refrigerated at 2-8°C for up to 2 weeks. For long term storage store at -20°C in small aliquots to prevent freeze-thaw cycles.
Precautions	DRAGON (RGMB) Antibody (C-term) is for research use only and not for use in diagnostic or therapeutic procedures.

## Protein Information

---

Name	RGMB {ECO:0000303   PubMed:19324014, ECO:0000312   HGNC:HGNC:26896}
Function	Member of the repulsive guidance molecule (RGM) family that contributes to the patterning of the developing nervous system (By similarity). Acts as a bone morphogenetic protein (BMP) coreceptor that potentiates BMP signaling

(By similarity). Promotes neuronal adhesion (By similarity). May inhibit neurite outgrowth.

## Cellular Location

Cell membrane {ECO:0000250|UniProtKB:Q7TQ33}; Lipid-anchor, GPI-anchor {ECO:0000250|UniProtKB:Q7TQ33}. Membrane raft {ECO:0000250|UniProtKB:Q7TQ33}

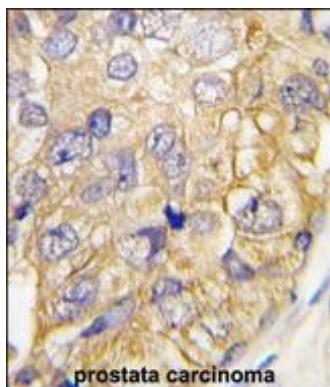
## Background

Repulsive Guidance Molecule B (RGMB) is primarily expressed in the central nervous system. RGM A and B both appear at every level of the developing neural axis, where they colocalize to a large extent in the mantle layer, although only RGMA appears in the neuroepithelium, and only RGMB in the peripheral nervous system. During development, both RGMA and B appear also in lung and in limb cartilage, while RGMB has additional expression domains in pancreas.

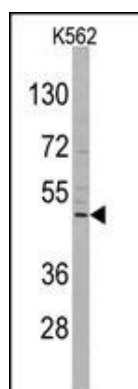
## References

Schnichels,S., Gene Expr. Patterns 8 (1), 1-11 (2007)  
Metzger,M., Dev. Dyn. 234 (1), 169-175 (2005)  
Xia,Y., Endocrinology 146 (8), 3614-3621 (2005)

## Images



Formalin-fixed and paraffin-embedded human prostate carcinoma tissue reacted with DRAGON (RGMB) (C-term) (Cat.#AP1421b), which was peroxidase-conjugated to the secondary antibody, followed by DAB staining. This data demonstrates the use of this antibody for immunohistochemistry; clinical relevance has not been evaluated.



Western blot analysis of DRAGON (RGMB) Antibody (C-term) in K562 cell line lysates (35ug/lane). DRAGON (arrow) was detected using the purified Pab.

Please note: All products are 'FOR RESEARCH USE ONLY. NOT FOR USE IN DIAGNOSTIC OR THERAPEUTIC PROCEDURES'.