

# DRAGON (RGMB) Antibody (Center)

Purified Rabbit Polyclonal Antibody (Pab)

Catalog # AP1421c

## Product Information

---

<b>Application</b>	WB, IHC-P, E
<b>Primary Accession</b>	<a href="#">Q6NW40</a>
<b>Other Accession</b>	<a href="#">Q7TQ33</a>
<b>Reactivity</b>	Human, Mouse
<b>Host</b>	Rabbit
<b>Clonality</b>	Polyclonal
<b>Isotype</b>	Rabbit IgG
<b>Clone Names</b>	RB08960
<b>Calculated MW</b>	47547
<b>Antigen Region</b>	278-309

## Additional Information

---

<b>Gene ID</b>	285704
<b>Other Names</b>	RGM domain family member B, DRG11-responsive axonal guidance and outgrowth of neurite, DRAGON, RGMB
<b>Target/Specificity</b>	This DRAGON (RGMB) antibody is generated from rabbits immunized with a KLH conjugated synthetic peptide between 278-309 amino acids from the Central region of human DRAGON (RGMB).
<b>Dilution</b>	WB~~1:1000 IHC-P~~1:100~500 E~~Use at an assay dependent concentration.
<b>Format</b>	Purified polyclonal antibody supplied in PBS with 0.05% (V/V) Proclin 300. This antibody is purified through a protein A column, followed by peptide affinity purification.
<b>Storage</b>	Maintain refrigerated at 2-8°C for up to 2 weeks. For long term storage store at -20°C in small aliquots to prevent freeze-thaw cycles.
<b>Precautions</b>	DRAGON (RGMB) Antibody (Center) is for research use only and not for use in diagnostic or therapeutic procedures.

## Protein Information

---

<b>Name</b>	RGMB {ECO:0000303   PubMed:19324014, ECO:0000312   HGNC:HGNC:26896}
<b>Function</b>	Member of the repulsive guidance molecule (RGM) family that contributes to the patterning of the developing nervous system (By similarity). Acts as a bone morphogenetic protein (BMP) coreceptor that potentiates BMP signaling

(By similarity). Promotes neuronal adhesion (By similarity). May inhibit neurite outgrowth.

#### Cellular Location

Cell membrane {ECO:0000250|UniProtKB:Q7TQ33}; Lipid-anchor, GPI-anchor {ECO:0000250|UniProtKB:Q7TQ33}. Membrane raft {ECO:0000250|UniProtKB:Q7TQ33}

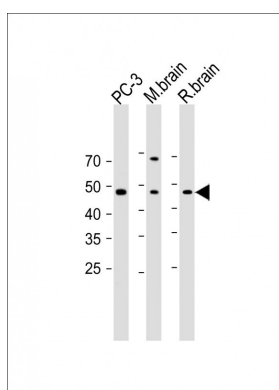
## Background

Repulsive Guidance Molecule B (RGMB) is primarily expressed in the central nervous system. RGM A and B both appear at every level of the developing neural axis, where they colocalize to a large extent in the mantle layer, although only RGMA appears in the neuroepithelium, and only RGMB in the peripheral nervous system. During development, both RGMA and B appear also in lung and in limb cartilage, while RGMB has additional expression domains in pancreas.

## References

Schnichels,S., Gene Expr. Patterns 8 (1), 1-11 (2007)  
Metzger,M., Dev. Dyn. 234 (1), 169-175 (2005)  
Xia,Y., Endocrinology 146 (8), 3614-3621 (2005)

## Images



All lanes: Anti-DRAGON (RGMB) Antibody (Center) at 1:1000 dilution  
Lane 1: PC-3 whole cell lysate  
Lane 2: Mouse brain lysate  
Lane 3: Rat brain lysate  
Lysates/proteins at 20 µg per lane. Secondary: Goat Anti-Rabbit IgG, (H+L), Peroxidase conjugated (ASP1615) at 1/15000 dilution. Observed band size: 47.5 kDa  
Blocking/Dilution buffer: 5% NFDN/TBST.

Please note: All products are 'FOR RESEARCH USE ONLY. NOT FOR USE IN DIAGNOSTIC OR THERAPEUTIC PROCEDURES'.