

HDBP1 Antibody (Center)

Purified Rabbit Polyclonal Antibody (Pab)

Catalog # AP1422c

Product Information

Application	IHC-P, WB, E
Primary Accession	Q9NR83
Reactivity	Human
Host	Rabbit
Clonality	Polyclonal
Isotype	Rabbit IgG
Calculated MW	41267
Antigen Region	213-242

Additional Information

Gene ID	56731
Other Names	SLC2A4 regulator, GLUT4 enhancer factor, GEF, Huntington disease gene regulatory region-binding protein 1, HDBP-1, SLC2A4RG, HDBP1
Target/Specificity	This HDBP1 antibody is generated from rabbits immunized with a KLH conjugated synthetic peptide between 213-242 amino acids from the Central region of human HDBP1.
Dilution	IHC-P~~1:100~500 WB~~1:1000 E~~Use at an assay dependent concentration.
Format	Purified monoclonal antibody supplied in PBS with 0.09% (W/V) sodium azide. This antibody is purified through a protein G column, followed by dialysis against PBS.
Storage	Maintain refrigerated at 2-8°C for up to 2 weeks. For long term storage store at -20°C in small aliquots to prevent freeze-thaw cycles.
Precautions	HDBP1 Antibody (Center) is for research use only and not for use in diagnostic or therapeutic procedures.

Protein Information

Name	SLC2A4RG
Synonyms	HDBP1
Function	Transcription factor involved in SLC2A4 and HD gene transactivation. Binds to the consensus sequence 5'-GCCGGCG-3'.

Cellular Location	Cytoplasm. Nucleus. Note=Shuttles between the cytoplasm and the nucleus
Tissue Location	According to PubMed:14630949, expressed in heart, skeletal muscle, liver, kidney and pancreas; undetectable in lung, placenta or brain. According to PubMed:14625278, ubiquitously expressed, with lowest expression in brain and ileum

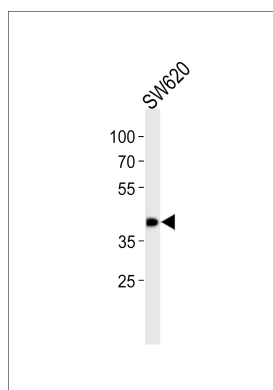
Background

THDBP1 is a nuclear transcription factor involved in the activation of the solute carrier family 2 member 4 gene. This protein interacts with another transcription factor, myocyte enhancer factor 2, to activate transcription of this gene.

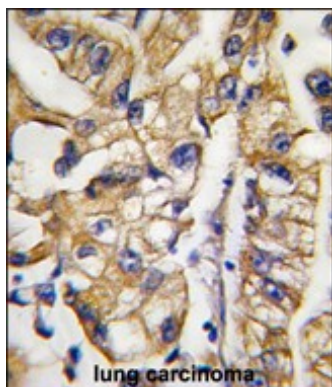
References

Jones,M.R., Fertil. Steril. (2008)
 McGee,S.L., FASEB J. 20 (2), 348-349 (2006)
 Tanaka,K., J. Biol. Chem. 279 (8), 7275-7286 (2004)

Images



HDBP1 Antibody (Center) (Cat. #AP1422c) western blot analysis in SW620 cell line lysates (35ug/lane). This demonstrates the HDBP1 antibody detected the HDBP1 protein (arrow).



Formalin-fixed and paraffin-embedded human lung carcinoma tissue reacted with HDBP1 Antibody (Center) (Cat.#AP1422c), which was peroxidase-conjugated to the secondary antibody, followed by DAB staining. This data demonstrates the use of this antibody for immunohistochemistry; clinical relevance has not been evaluated.

Citations

- [Shuttling SLC2A4RG is regulated by 14-3-3θ to modulate cell survival via caspase-3 and caspase-6 in human glioma.](#)