

PPYR1 Antibody (N-term)

Affinity Purified Rabbit Polyclonal Antibody (Pab)

Catalog # AP14238a

Product Information

Application	WB, E
Primary Accession	P50391
Other Accession	NP_005963.3
Reactivity	Human
Host	Rabbit
Clonality	Polyclonal
Isotype	Rabbit IgG
Clone Names	RB34259
Calculated MW	42142
Antigen Region	1-30

Additional Information

Gene ID	100996758;5540
Other Names	Neuropeptide Y receptor type 4, NPY4-R, Pancreatic polypeptide receptor 1, PP1, NPY4R, PPYR1
Target/Specificity	This PPYR1 antibody is generated from rabbits immunized with a KLH conjugated synthetic peptide between 1-30 amino acids from the N-terminal region of human PPYR1.
Dilution	WB~~1:1000 E~~Use at an assay dependent concentration.
Format	Purified polyclonal antibody supplied in PBS with 0.09% (W/V) sodium azide. This antibody is purified through a protein A column, followed by peptide affinity purification.
Storage	Maintain refrigerated at 2-8°C for up to 2 weeks. For long term storage store at -20°C in small aliquots to prevent freeze-thaw cycles.
Precautions	PPYR1 Antibody (N-term) is for research use only and not for use in diagnostic or therapeutic procedures.

Protein Information

Name	NPY4R
Synonyms	PPYR1
Function	G protein-coupled receptor for PPY/pancreatic polypeptide/PP,

NPY/neuropeptide Y and PYY/peptide YY that is negatively coupled to cAMP (PubMed:[7493937](#), PubMed:[7592911](#)). The rank order of affinity for these polypeptides and their derivatives is PP, PP (2-36) and [Ile-31, Gln-34] PP > [Pro-34] PYY > PYY and [Leu-31, Pro-34] NPY > NPY > PYY (3-36) and NPY (2-36) > PP (13-36) > PP (31-36) > NPY free acid.

Cellular Location

Cell membrane; Multi-pass membrane protein

Tissue Location

Highest levels found in brain, coronary artery and ileum. Low levels in pancreas and kidney. Detected in colon and small intestine.

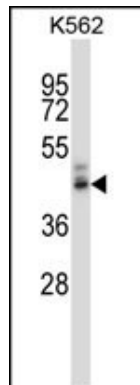
Background

Receptor for neuropeptide Y and peptide YY. The rank order of affinity of this receptor for pancreatic polypeptides is PP, PP (2-36) and [Ile-31, Gln-34] PP > [Pro-34] PYY > PYY and [Leu-31, Pro-34] NPY > NPY > PYY (3-36) and NPY (2-36) > PP (13-36) > PP (31-36) > NPY free acid.

References

Rose, J.E., et al. Mol. Med. 16 (7-8), 247-253 (2010) :
Umeda, T., et al. Peptides 30(8):1441-1447(2009)
Sha, B.Y., et al. J. Hum. Genet. 54(4):199-202(2009)
Gao, Y., et al. Biochemistry 47(43):11367-11376(2008)
Parker, E., et al. Eur. J. Pharmacol. 440 (2-3), 173-187 (2002) :

Images



PPYR1 Antibody (N-term) (Cat. #AP14238a) western blot analysis in K562 cell line lysates (35ug/lane). This demonstrates the PPYR1 antibody detected the PPYR1 protein (arrow).

Please note: All products are 'FOR RESEARCH USE ONLY. NOT FOR USE IN DIAGNOSTIC OR THERAPEUTIC PROCEDURES'.