

# NAPB Antibody (N-term)

Affinity Purified Rabbit Polyclonal Antibody (Pab)

Catalog # AP14249a

## Product Information

---

<b>Application</b>	WB, E
<b>Primary Accession</b>	<a href="#">Q9H115</a>
<b>Other Accession</b>	<a href="#">P85969</a> , <a href="#">P28663</a> , <a href="#">P81126</a> , <a href="#">NP_071363.1</a>
<b>Reactivity</b>	Human
<b>Predicted</b>	Bovine, Mouse, Rat
<b>Host</b>	Rabbit
<b>Clonality</b>	Polyclonal
<b>Isotype</b>	Rabbit IgG
<b>Clone Names</b>	RB34296
<b>Calculated MW</b>	33557
<b>Antigen Region</b>	13-40

## Additional Information

---

<b>Gene ID</b>	63908
<b>Other Names</b>	Beta-soluble NSF attachment protein, SNAP-beta, N-ethylmaleimide-sensitive factor attachment protein beta, NAPB, SNAPB
<b>Target/Specificity</b>	This NAPB antibody is generated from rabbits immunized with a KLH conjugated synthetic peptide between 13-40 amino acids from the N-terminal region of human NAPB.
<b>Dilution</b>	WB~~1:1000 E~~Use at an assay dependent concentration.
<b>Format</b>	Purified polyclonal antibody supplied in PBS with 0.09% (W/V) sodium azide. This antibody is purified through a protein A column, followed by peptide affinity purification.
<b>Storage</b>	Maintain refrigerated at 2-8°C for up to 2 weeks. For long term storage store at -20°C in small aliquots to prevent freeze-thaw cycles.
<b>Precautions</b>	NAPB Antibody (N-term) is for research use only and not for use in diagnostic or therapeutic procedures.

## Protein Information

---

<b>Name</b>	NAPB
<b>Synonyms</b>	SNAPB

**Function** Required for vesicular transport between the endoplasmic reticulum and the Golgi apparatus.

**Cellular Location** Membrane; Peripheral membrane protein

## Background

---

NAPB is required for vesicular transport between the endoplasmic reticulum and the Golgi apparatus (By similarity).

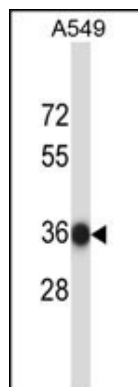
## References

---

Lamesch, P., et al. Genomics 89(3):307-315(2007)  
Prekeris, R., et al. J. Cell Biol. 143(4):957-971(1998)  
Osten, P., et al. Neuron 21(1):99-110(1998)  
Whiteheart, S.W., et al. Nature 362(6418):353-355(1993)  
Wilson, D.W., et al. J. Cell Biol. 117(3):531-538(1992)

## Images

---



NAPB Antibody (N-term) (Cat. #AP14249a) western blot analysis in A549 cell line lysates (35ug/lane). This demonstrates the NAPB antibody detected the NAPB protein (arrow).

Please note: All products are 'FOR RESEARCH USE ONLY. NOT FOR USE IN DIAGNOSTIC OR THERAPEUTIC PROCEDURES'.