

Mouse Plk5 Antibody (N-term)

Affinity Purified Rabbit Polyclonal Antibody (Pab)

Catalog # AP14276a

Product Information

Application	WB, E
Primary Accession	Q4FZD7
Other Accession	NP_898975.2
Reactivity	Mouse
Host	Rabbit
Clonality	Polyclonal
Isotype	Rabbit IgG
Clone Names	RB34862
Calculated MW	66055
Antigen Region	4-31

Additional Information

Gene ID	216166
Other Names	Inactive serine/threonine-protein kinase PLK5, Polo-like kinase 5, PLK-5, Plk5 {ECO:0000250 UniProtKB:Q64702}
Target/Specificity	This Mouse Plk5 antibody is generated from rabbits immunized with a KLH conjugated synthetic peptide between 4-31 amino acids from the N-terminal region of mouse Plk5.
Dilution	WB~~1:1000 E~~Use at an assay dependent concentration.
Format	Purified polyclonal antibody supplied in PBS with 0.09% (W/V) sodium azide. This antibody is purified through a protein A column, followed by peptide affinity purification.
Storage	Maintain refrigerated at 2-8°C for up to 2 weeks. For long term storage store at -20°C in small aliquots to prevent freeze-thaw cycles.
Precautions	Mouse Plk5 Antibody (N-term) is for research use only and not for use in diagnostic or therapeutic procedures.

Protein Information

Name	Plk5 {ECO:0000250 UniProtKB:Q64702}
Function	Inactive serine/threonine-protein kinase that plays a role in cell cycle progression and neuronal differentiation.

Cellular Location	Nucleus, nucleolus. Cytoplasm
Tissue Location	Expressed in the cerebellum, eye and brain cortex (at protein level). Expressed in highly differentiated tissues, such as brain, eyes and ovary. Not detectable in proliferating tissues, such as the colon, spleen and placenta

Background

PLK5 (Serine/threonine-protein kinase PLK5) belongs to the protein kinase superfamily and Ser/Thr protein kinase family and CDC5/Polo subfamily. PLK5P contains 1 POLO box domain and 1 Serine/Threonine protein kinase catalytic domain.

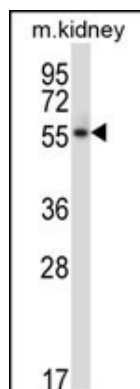
References

Pereira, J.D., et al. Proc. Natl. Acad. Sci. U.S.A. 107(36):15957-15962(2010)

Andrysik, Z., et al. Nucleic Acids Res. 38(9):2931-2943(2010)

Blackshaw, S., et al. PLoS Biol. 2 (9), E247 (2004) :

Images



Mouse Plk5 Antibody (N-term) (Cat. #AP14276a) western blot analysis in mouse kidney tissue lysates (35ug/lane). This demonstrates the Plk5 antibody detected the Plk5 protein (arrow).

Please note: All products are 'FOR RESEARCH USE ONLY. NOT FOR USE IN DIAGNOSTIC OR THERAPEUTIC PROCEDURES'.