

# Mouse Cdk15 Antibody (N-term)

Affinity Purified Rabbit Polyclonal Antibody (Pab)

Catalog # AP14286a

## Product Information

---

<b>Application</b>	WB, E
<b>Primary Accession</b>	<a href="#">Q3V3A1</a>
<b>Other Accession</b>	<a href="#">XP_001475314.1</a> , <a href="#">XP_995753.1</a>
<b>Reactivity</b>	Human, Mouse
<b>Host</b>	Rabbit
<b>Clonality</b>	Polyclonal
<b>Isotype</b>	Rabbit IgG
<b>Clone Names</b>	RB35069
<b>Calculated MW</b>	48457
<b>Antigen Region</b>	96-124

## Additional Information

---

<b>Gene ID</b>	271697
<b>Other Names</b>	Cyclin-dependent kinase 15, Amyotrophic lateral sclerosis 2 chromosomal region candidate gene 7 protein homolog, Cell division protein kinase 15, Serine/threonine-protein kinase ALS2CR7, Serine/threonine-protein kinase PFTAIRES-2, Cdk15, Als2cr7, Pftk2
<b>Target/Specificity</b>	This Mouse Cdk15 antibody is generated from rabbits immunized with a KLH conjugated synthetic peptide between 96-124 amino acids from the N-terminal region of mouse Cdk15.
<b>Dilution</b>	WB~~1:1000 E~~Use at an assay dependent concentration.
<b>Format</b>	Purified polyclonal antibody supplied in PBS with 0.09% (W/V) sodium azide. This antibody is purified through a protein A column, followed by peptide affinity purification.
<b>Storage</b>	Maintain refrigerated at 2-8°C for up to 2 weeks. For long term storage store at -20°C in small aliquots to prevent freeze-thaw cycles.
<b>Precautions</b>	Mouse Cdk15 Antibody (N-term) is for research use only and not for use in diagnostic or therapeutic procedures.

## Protein Information

---

<b>Name</b>	Cdk15
<b>Synonyms</b>	Als2cr7, Pftk2

## Function

Serine/threonine-protein kinase that acts like an antiapoptotic protein that counters TRAIL/TNFSF10-induced apoptosis by inducing phosphorylation of BIRC5 at 'Thr-34'.

## Background

---

Serine/threonine-protein kinase involved in the control of the eukaryotic cell cycle, whose activity is controlled by an associated cyclin (By similarity).

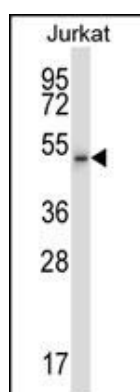
## References

---

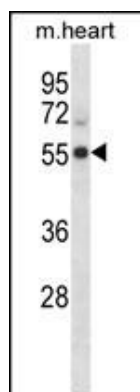
Zambrowicz, B.P., et al. Proc. Natl. Acad. Sci. U.S.A. 100(24):14109-14114(2003)

## Images

---



Mouse Cdk15 Antibody (N-term) (Cat. #AP14286a)  
western blot analysis in Jurkat cell line lysates  
(35ug/lane). This demonstrates the Cdk15 antibody  
detected the Cdk15 protein (arrow).



Mouse Cdk15 Antibody (N-term) (Cat. #AP14286a)  
western blot analysis in mouse heart tissue lysates  
(35ug/lane). This demonstrates the Cdk15 antibody  
detected the Cdk15 protein (arrow).

Please note: All products are 'FOR RESEARCH USE ONLY. NOT FOR USE IN DIAGNOSTIC OR THERAPEUTIC PROCEDURES'.