

## Rax Antibody (C-term)

Affinity Purified Rabbit Polyclonal Antibody (Pab)

Catalog # AP1428b

### Product Information

---

<b>Application</b>	WB, E
<b>Primary Accession</b>	<a href="#">Q9Y2V3</a>
<b>Other Accession</b>	<a href="#">Q9JLT7</a> , <a href="#">Q35602</a>
<b>Reactivity</b>	Human, Rat, Mouse
<b>Predicted</b>	Mouse, Rat
<b>Host</b>	Rabbit
<b>Clonality</b>	Polyclonal
<b>Isotype</b>	Rabbit IgG
<b>Calculated MW</b>	36676
<b>Antigen Region</b>	315-346

### Additional Information

---

<b>Gene ID</b>	30062
<b>Other Names</b>	Retinal homeobox protein Rx, Retina and anterior neural fold homeobox protein, RAX, RX
<b>Target/Specificity</b>	This Rax antibody is generated from rabbits immunized with a KLH conjugated synthetic peptide between 315-346 amino acids from the C-terminal region of human Rax.
<b>Dilution</b>	WB~~1:1000 E~~Use at an assay dependent concentration.
<b>Format</b>	Purified polyclonal antibody supplied in PBS with 0.09% (W/V) sodium azide. This antibody is purified through a protein A column, followed by peptide affinity purification.
<b>Storage</b>	Maintain refrigerated at 2-8°C for up to 2 weeks. For long term storage store at -20°C in small aliquots to prevent freeze-thaw cycles.
<b>Precautions</b>	Rax Antibody (C-term) is for research use only and not for use in diagnostic or therapeutic procedures.

### Protein Information

---

<b>Name</b>	RAX
<b>Synonyms</b>	RX
<b>Function</b>	Plays a critical role in eye formation by regulating the initial specification of

retinal cells and/or their subsequent proliferation. Binds to the photoreceptor conserved element-I (PCE- 1/Ret 1) in the photoreceptor cell-specific arrestin promoter.

**Cellular Location**

Nucleus.

**Tissue Location**

Expressed in the developing eye and weakly expressed in the adult retina

## Background

---

Rax plays a critical role in eye formation by regulating the initial specification of retinal cells and/or their subsequent proliferation. It binds to the photoreceptor conserved element-I (PCE-1/Ret 1) in the photoreceptor cell-specific arrestin promoter.

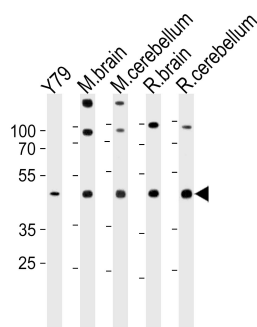
## References

---

Voronina,V.A., Hum. Mol. Genet. 13 (3), 315-322 (2004)  
Mikkola,I., J. Biol. Chem. 276 (6), 4109-4118 (2001)  
Mathers,P.H., Cell. Mol. Life Sci. 57 (2), 186-194 (2000)

## Images

---



Rax Antibody (C-term) (Cat. #AP1428b) western blot analysis in Y79 cell line, mouse brain, cerebellum and rat brain, cerebellum tissue lysates (35ug/lane). This demonstrates the Rax antibody detected the Rax protein (arrow).

Please note: All products are 'FOR RESEARCH USE ONLY. NOT FOR USE IN DIAGNOSTIC OR THERAPEUTIC PROCEDURES'.