

Mouse Rage Antibody (N-term)

Affinity Purified Rabbit Polyclonal Antibody (Pab)

Catalog # AP14293a

Product Information

Application	WB, E
Primary Accession	Q9WVS4
Other Accession	NP_036103.1
Reactivity	Human, Mouse
Host	Rabbit
Clonality	Polyclonal
Isotype	Rabbit IgG
Clone Names	RB35085
Calculated MW	48065
Antigen Region	76-104

Additional Information

Gene ID	26448
Other Names	MAPK/MAK/MRK overlapping kinase, MOK protein kinase, Serine/threonine kinase 30, Mok, Rage, Stk30
Target/Specificity	This Mouse Rage antibody is generated from rabbits immunized with a KLH conjugated synthetic peptide between 76-104 amino acids from the N-terminal region of mouse Rage.
Dilution	WB~~1:1000 E~~Use at an assay dependent concentration.
Format	Purified polyclonal antibody supplied in PBS with 0.09% (W/V) sodium azide. This antibody is purified through a protein A column, followed by peptide affinity purification.
Storage	Maintain refrigerated at 2-8°C for up to 2 weeks. For long term storage store at -20°C in small aliquots to prevent freeze-thaw cycles.
Precautions	Mouse Rage Antibody (N-term) is for research use only and not for use in diagnostic or therapeutic procedures.

Protein Information

Name	Mok
Synonyms	Rage, Stk30
Function	Able to phosphorylate several exogenous substrates and to undergo

autophosphorylation (PubMed:[10421840](#)). Negatively regulates cilium length in a cAMP and mTORC1 signaling-dependent manner (PubMed:[25243405](#)).

Cellular Location

Cytoplasm. Cell projection, cilium. Nucleus

Tissue Location

Highly expressed in testis, and less in kidney, brain and lung

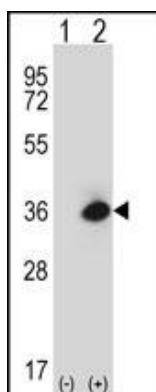
Background

Rage is able to phosphorylate several exogenous substrates and to undergo autophosphorylation.

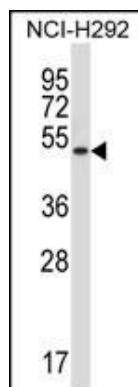
References

Sun, L., et al. Cardiovasc. Res. 82(2):371-381(2009)
Zeng, S., et al. J. Hepatol. 50(5):929-936(2009)
Bjork, P., et al. PLoS Biol. 7 (4), E97 (2009) :
Aneja, R.K., et al. J. Leukoc. Biol. 84(5):1326-1334(2008)
Chen, Y., et al. J. Immunol. 181(6):4272-4278(2008)

Images

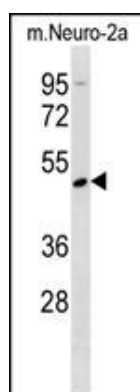


Western blot analysis of RAGE (arrow) using rabbit polyclonal Mouse RAGE Antibody (N-term) (Cat. #AP14293a). 293 cell lysates (2 ug/lane) either nontransfected (Lane 1) or transiently transfected (Lane 2) with the RAGE gene.



Mouse RAGE Antibody (N-term) (Cat. #AP14293a) western blot analysis in NCI-H292 cell line lysates (35ug/lane). This demonstrates the RAGE antibody detected the RAGE protein (arrow).

Mouse RAGE Antibody (N-term) (Cat. #AP14293a) western blot analysis in mouse Neuro-2a cell line lysates (35ug/lane). This demonstrates the RAGE antibody detected the RAGE protein (arrow).



Please note: All products are 'FOR RESEARCH USE ONLY. NOT FOR USE IN DIAGNOSTIC OR THERAPEUTIC PROCEDURES'.