

ZFPL1 Antibody (Center)

Affinity Purified Rabbit Polyclonal Antibody (Pab)

Catalog # AP14302c

Product Information

Application	WB, E
Primary Accession	O95159
Other Accession	NP_006773.2
Reactivity	Human
Host	Rabbit
Clonality	Polyclonal
Isotype	Rabbit IgG
Clone Names	RB35106
Calculated MW	34114
Antigen Region	191-219

Additional Information

Gene ID	7542
Other Names	Zinc finger protein-like 1, Zinc finger protein MCG4, ZFPL1
Target/Specificity	This ZFPL1 antibody is generated from rabbits immunized with a KLH conjugated synthetic peptide between 191-219 amino acids from the Central region of human ZFPL1.
Dilution	WB~~1:1000 E~~Use at an assay dependent concentration.
Format	Purified polyclonal antibody supplied in PBS with 0.09% (W/V) sodium azide. This antibody is purified through a protein A column, followed by peptide affinity purification.
Storage	Maintain refrigerated at 2-8°C for up to 2 weeks. For long term storage store at -20°C in small aliquots to prevent freeze-thaw cycles.
Precautions	ZFPL1 Antibody (Center) is for research use only and not for use in diagnostic or therapeutic procedures.

Protein Information

Name	ZFPL1
Function	Required for cis-Golgi integrity and efficient ER to Golgi transport. Involved in the maintenance of the integrity of the cis- Golgi, possibly via its interaction with GOLGA2/GM130.

Cellular Location	Golgi apparatus, cis-Golgi network membrane; Single-pass membrane protein
Tissue Location	Expressed strongly in the exocrine pancreas.

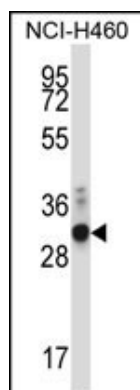
Background

ZFPL1 is required for cis-Golgi integrity and efficient ER to Golgi transport. Involved in the maintenance of the integrity of the cis-Golgi, possibly via its interaction with GOLGA2/GM130.

References

Chiu, C.F., et al. EMBO J. 27(7):934-947(2008)
 Clark, A.G., et al. Science 302(5652):1960-1963(2003)
 Imabayashi, H., et al. Exp. Cell Res. 288(1):35-50(2003)
 Hoppener, J.W., et al. Genomics 50(2):251-259(1998)
 Guru, S.C., et al. Genome Res. 7(7):725-735(1997)

Images



ZFPL1 Antibody (Center) (Cat. #AP14302c) western blot analysis in NCI-H460 cell line lysates (35ug/lane). This demonstrates the ZFPL1 antibody detected the ZFPL1 protein (arrow).

Please note: All products are 'FOR RESEARCH USE ONLY. NOT FOR USE IN DIAGNOSTIC OR THERAPEUTIC PROCEDURES'.