

ALDH2 Antibody

Affinity Purified Rabbit Polyclonal Antibody (Pab)

Catalog # AP1432d

Product Information

Application	WB, IHC-P, FC, E
Primary Accession	P05091
Reactivity	Human
Host	Rabbit
Clonality	Polyclonal
Isotype	Rabbit IgG
Calculated MW	56381
Antigen Region	1-517

Additional Information

Gene ID	217
Other Names	Aldehyde dehydrogenase, mitochondrial, ALDH class 2, ALDH-E2, ALDHI, ALDH2, ALDM
Target/Specificity	This ALDH2 antibody is generated from rabbits immunized with human ALDH2 recombinant protein.
Dilution	WB~~1:1000 IHC-P~~1:100~500 FC~~1:10~50 E~~Use at an assay dependent concentration.
Format	Purified polyclonal antibody supplied in PBS with 0.05% (V/V) Proclin 300. This antibody is purified through a protein A column, followed by peptide affinity purification.
Storage	Maintain refrigerated at 2-8°C for up to 2 weeks. For long term storage store at -20°C in small aliquots to prevent freeze-thaw cycles.
Precautions	ALDH2 Antibody is for research use only and not for use in diagnostic or therapeutic procedures.

Protein Information

Name	ALDH2
Synonyms	ALDM
Function	Required for clearance of cellular formaldehyde, a cytotoxic and carcinogenic metabolite that induces DNA damage.

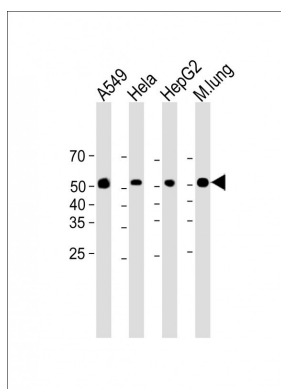
Background

ALDH2 belongs to the aldehyde dehydrogenase family of proteins. Aldehyde dehydrogenase is the second enzyme of the major oxidative pathway of alcohol metabolism. Two major liver isoforms of this enzyme, cytosolic and mitochondrial, can be distinguished by their electrophoretic mobilities, kinetic properties, and subcellular localizations. Most Caucasians have two major isozymes, while approximately 50% of Asians have only the cytosolic isozyme, missing the mitochondrial isozyme. A remarkably higher frequency of acute alcohol intoxication among Asians than among Caucasians could be related to the absence of the mitochondrial isozyme.

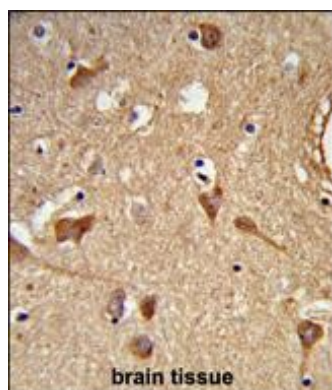
References

Guo,Y.M., World J. Gastroenterol. 14 (9), 1444-1449 (2008)
Chen,L., PLoS Med. 5 (3), E52 (2008)
Teeguarden,J.G., Inhal Toxicol 20 (4), 375-390 (2008)
Yoshida,A., Pharmacogenetics 2 (4), 139-147 (1992)

Images

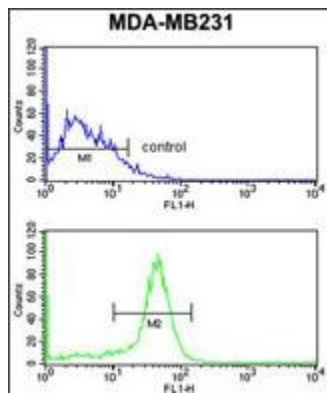


All lanes: Anti-ALDH2 Antibody at 1:2000 dilution Lane 1: A549 whole cell lysate Lane 2: Hela whole cell lysate Lane 3: HepG2 whole cell lysate Lane 4: Mouse lung lysate Lysates/proteins at 20 µg per lane. Secondary: Goat Anti-Rabbit IgG, (H+L), Peroxidase conjugated (ASP1615) at 1/15000 dilution. Observed band size: 53 KDa Blocking/Dilution buffer: 5% NFDM/TBST.



Formalin-fixed and paraffin-embedded human brain tissue reacted with ALDH2 Antibody, which was peroxidase-conjugated to the secondary antibody, followed by DAB staining. This data demonstrates the use of this antibody for immunohistochemistry; clinical relevance has not been evaluated.

ALDH2 Antibody (Cat. #AP1432d) flow cytometry analysis of MDA-MB231 cells (bottom histogram) compared to a negative control cell (top histogram). FITC-conjugated goat-anti-rabbit secondary antibodies were used for the analysis.



Please note: All products are 'FOR RESEARCH USE ONLY. NOT FOR USE IN DIAGNOSTIC OR THERAPEUTIC PROCEDURES'.