

BGLAP Antibody (Center)

Affinity Purified Rabbit Polyclonal Antibody (Pab)
Catalog # AP14337c

Product Information

Application	WB, E
Primary Accession	P02818
Other Accession	NP_954642.1
Reactivity	Human
Host	Rabbit
Clonality	Polyclonal
Isotype	Rabbit IgG
Clone Names	RB30273
Antigen Region	23-52

Additional Information

Other Names	Osteocalcin, Bone Gla protein, BGP, Gamma-carboxyglutamic acid-containing protein, BGLAP
Target/Specificity	This BGLAP antibody is generated from rabbits immunized with a KLH conjugated synthetic peptide between 23-52 amino acids from the Central region of human BGLAP.
Dilution	WB~~1:1000 E~~Use at an assay dependent concentration.
Format	Purified polyclonal antibody supplied in PBS with 0.09% (W/V) sodium azide. This antibody is purified through a protein A column, followed by peptide affinity purification.
Storage	Maintain refrigerated at 2-8°C for up to 2 weeks. For long term storage store at -20°C in small aliquots to prevent freeze-thaw cycles.
Precautions	BGLAP Antibody (Center) is for research use only and not for use in diagnostic or therapeutic procedures.

Protein Information

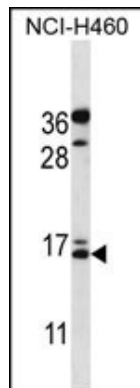
Background

Constitutes 1-2% of the total bone protein. It binds strongly to apatite and calcium.

References

Yeap, B.B., et al. Eur. J. Endocrinol. 163(2):265-272(2010)
Lee, Y.J., et al. Diabetes Care 33 (7), E90 (2010) :
Foresta, C., et al. J. Clin. Endocrinol. Metab. 95(7):3502-3506(2010)
Saleem, U., et al. Arterioscler. Thromb. Vasc. Biol. 30(7):1474-1478(2010)
Das, S.K., et al. Dis. Markers 28(5):281-286(2010)

Images



BGLAP Antibody (Center) (Cat. #AP14337c) western blot analysis in NCI-H460 cell line lysates (35ug/lane). This demonstrates the BGLAP antibody detected the BGLAP protein (arrow).

Please note: All products are 'FOR RESEARCH USE ONLY. NOT FOR USE IN DIAGNOSTIC OR THERAPEUTIC PROCEDURES'.