

# TOLLIP Antibody (C-term)

Affinity Purified Rabbit Polyclonal Antibody (Pab)

Catalog # AP14351b

## Product Information

---

<b>Application</b>	WB, E
<b>Primary Accession</b>	<a href="#">Q9H0E2</a>
<b>Other Accession</b>	<a href="#">A2RUW1</a> , <a href="#">Q9QZ06</a> , <a href="#">NP_061882.2</a>
<b>Reactivity</b>	Human
<b>Predicted</b>	Mouse, Rat
<b>Host</b>	Rabbit
<b>Clonality</b>	Polyclonal
<b>Isotype</b>	Rabbit IgG
<b>Clone Names</b>	RB33950
<b>Calculated MW</b>	30282
<b>Antigen Region</b>	236-265

## Additional Information

---

<b>Gene ID</b>	54472
<b>Other Names</b>	Toll-interacting protein, TOLLIP
<b>Target/Specificity</b>	This TOLLIP antibody is generated from rabbits immunized with a KLH conjugated synthetic peptide between 236-265 amino acids from the C-terminal region of human TOLLIP.
<b>Dilution</b>	WB~~1:1000 E~~Use at an assay dependent concentration.
<b>Format</b>	Purified polyclonal antibody supplied in PBS with 0.09% (W/V) sodium azide. This antibody is purified through a protein A column, followed by peptide affinity purification.
<b>Storage</b>	Maintain refrigerated at 2-8°C for up to 2 weeks. For long term storage store at -20°C in small aliquots to prevent freeze-thaw cycles.
<b>Precautions</b>	TOLLIP Antibody (C-term) is for research use only and not for use in diagnostic or therapeutic procedures.

## Protein Information

---

<b>Name</b>	TOLLIP
<b>Function</b>	Component of the signaling pathway of IL-1 and Toll-like receptors (PubMed: <a href="#">10854325</a> , PubMed: <a href="#">11751856</a> ). Inhibits cell activation by microbial products. Recruits IRAK1 to the IL-1 receptor complex (PubMed: <a href="#">10854325</a> ).

Inhibits IRAK1 phosphorylation and kinase activity (PubMed:[11751856](#)). Connects the ubiquitin pathway to autophagy by functioning as a ubiquitin-ATG8 family adapter and thus mediating autophagic clearance of ubiquitin conjugates (PubMed:[25042851](#)). The TOLLIP-dependent selective autophagy pathway plays an important role in clearance of cytotoxic polyQ proteins aggregates (PubMed:[25042851](#)). In a complex with TOM1, recruits ubiquitin-conjugated proteins onto early endosomes (PubMed:[15047686](#)). Binds to phosphatidylinositol 3-phosphate (PtdIns(3)P) (PubMed:[26320582](#)).

#### Cellular Location

Cytoplasm. Endosome. Early endosome Note=Localized to endo/exosomal vesicles

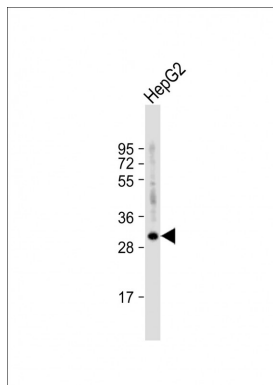
## Background

This gene encodes a ubiquitin-binding protein that interacts with several Toll-like receptor (TLR) signaling cascade components. The encoded protein regulates inflammatory signaling and is involved in interleukin-1 receptor trafficking and in the turnover of IL1R-associated kinase.

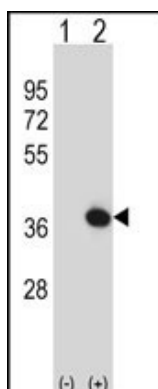
## References

- Han, S., et al. Hum. Immunol. 71(7):727-730(2010)  
 Rajaraman, P., et al. Cancer Epidemiol. Biomarkers Prev. 19(5):1356-1361(2010)  
 Davila, S., et al. Genes Immun. 11(3):232-238(2010)  
 Yoshida, T., et al. Int. J. Mol. Med. 25(4):649-656(2010)  
 Oguri, M., et al. Am. J. Hypertens. 23(1):70-77(2010)

## Images



Anti-TOLLIP Antibody (C-term) at 1:1000 dilution + HepG2 whole cell lysate Lysates/proteins at 20 µg per lane. Secondary Goat Anti-Rabbit IgG, (H+L), Peroxidase conjugated at 1/10000 dilution. Predicted band size : 30 kDa Blocking/Dilution buffer: 5% NFDM/TBST.



Western blot analysis of TOLLIP (arrow) using rabbit polyclonal TOLLIP Antibody (C-term) (Cat. #AP14351b). 293 cell lysates (2 ug/lane) either nontransfected (Lane 1) or transiently transfected (Lane 2) with the TOLLIP gene.