

# FRAT1 Antibody (C-term)

Purified Rabbit Polyclonal Antibody (Pab)

Catalog # AP1436b

## Product Information

---

<b>Application</b>	IHC-P, WB, E
<b>Primary Accession</b>	<a href="#">Q92837</a>
<b>Reactivity</b>	Human
<b>Host</b>	Rabbit
<b>Clonality</b>	Polyclonal
<b>Isotype</b>	Rabbit IgG
<b>Clone Names</b>	RB14254
<b>Calculated MW</b>	29093
<b>Antigen Region</b>	244-274

## Additional Information

---

<b>Gene ID</b>	10023
<b>Other Names</b>	Proto-oncogene FRAT1, Frequently rearranged in advanced T-cell lymphomas 1, FRAT-1, FRAT1
<b>Target/Specificity</b>	This FRAT1 antibody is generated from rabbits immunized with a KLH conjugated synthetic peptide between 244-274 amino acids from the C-terminal region of human FRAT1.
<b>Dilution</b>	IHC-P~~1:100~500 WB~~1:1000 E~~Use at an assay dependent concentration.
<b>Format</b>	Purified polyclonal antibody supplied in PBS with 0.09% (W/V) sodium azide. This antibody is prepared by Saturated Ammonium Sulfate (SAS) precipitation followed by dialysis against PBS.
<b>Storage</b>	Maintain refrigerated at 2-8°C for up to 2 weeks. For long term storage store at -20°C in small aliquots to prevent freeze-thaw cycles.
<b>Precautions</b>	FRAT1 Antibody (C-term) is for research use only and not for use in diagnostic or therapeutic procedures.

## Protein Information

---

<b>Name</b>	FRAT1
<b>Function</b>	Positively regulates the Wnt signaling pathway by stabilizing beta-catenin through the association with GSK-3. May play a role in tumor progression and collaborate with PIM1 and MYC in lymphomagenesis.

## Background

---

FRAT1 belongs to the GSK-3-binding protein family. It may function in tumor progression and in lymphomagenesis.

## References

---

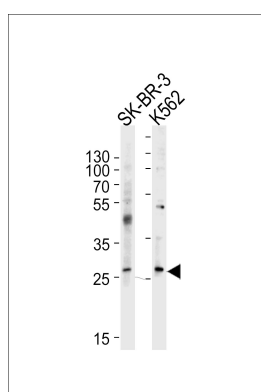
Hagen,T., J. Biol. Chem. 281 (46), 35021-35029 (2006)

Wang,Y., Br. J. Cancer 94 (5), 686-691 (2006)

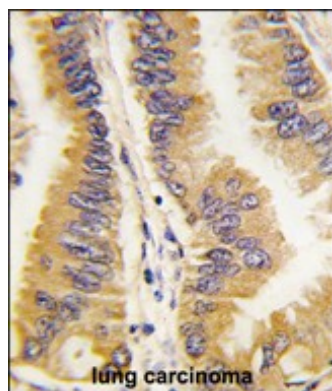
Hino,S., J. Biol. Chem. 278 (16), 14066-14073 (2003)

## Images

---



Western blot analysis of lysates from SK-BR-3, K562 cell line (from left to right), using FRAT1 Antibody (C-term)(Cat. #AP1436b). AP1436b was diluted at 1:1000 at each lane. A goat anti-rabbit IgG H&L(HRP) at 1:5000 dilution was used as the secondary antibody. Lysates at 35ug per lane.



Formalin-fixed and paraffin-embedded human lung carcinoma tissue reacted with FRAT1 antibody (C-term) (Cat.#AP1436b), which was peroxidase-conjugated to the secondary antibody, followed by DAB staining. This data demonstrates the use of this antibody for immunohistochemistry; clinical relevance has not been evaluated.

## Citations

---

- [The clinical significance of FRAT1 and ABCG2 expression in pancreatic ductal adenocarcinoma.](#)

Please note: All products are 'FOR RESEARCH USE ONLY. NOT FOR USE IN DIAGNOSTIC OR THERAPEUTIC PROCEDURES'.