

# CTDSP2 Antibody (N-term)

Affinity Purified Rabbit Polyclonal Antibody (Pab)  
Catalog # AP14394a

## Product Information

---

<b>Application</b>	WB, E
<b>Primary Accession</b>	<a href="#">O14595</a>
<b>Other Accession</b>	<a href="#">NP_005721.3</a>
<b>Reactivity</b>	Human, Mouse
<b>Host</b>	Rabbit
<b>Clonality</b>	Polyclonal
<b>Isotype</b>	Rabbit IgG
<b>Clone Names</b>	RB34326
<b>Antigen Region</b>	11-39

## Additional Information

---

<b>Other Names</b>	Carboxy-terminal domain RNA polymerase II polypeptide A small phosphatase 2, Nuclear LIM interactor-interacting factor 2, NLI-interacting factor 2, Protein OS-4, Small C-terminal domain phosphatase 2, Small CTD phosphatase 2, SCP2, CTDSP2, NIF2, OS4, SCP2
<b>Target/Specificity</b>	This CTDSP2 antibody is generated from rabbits immunized with a KLH conjugated synthetic peptide between 11-39 amino acids from the N-terminal region of human CTDSP2.
<b>Dilution</b>	WB~~1:1000 E~~Use at an assay dependent concentration.
<b>Format</b>	Purified polyclonal antibody supplied in PBS with 0.09% (W/V) sodium azide. This antibody is purified through a protein A column, followed by peptide affinity purification.
<b>Storage</b>	Maintain refrigerated at 2-8°C for up to 2 weeks. For long term storage store at -20°C in small aliquots to prevent freeze-thaw cycles.
<b>Precautions</b>	CTDSP2 Antibody (N-term) is for research use only and not for use in diagnostic or therapeutic procedures.

## Protein Information

---

### Background

---

Preferentially catalyzes the dephosphorylation of 'Ser-5' within the tandem 7 residues repeats in the C-terminal domain (CTD) of the largest RNA polymerase II subunit POLR2A. Negatively regulates RNA polymerase II transcription, possibly by controlling the transition from initiation/capping to processive

transcript elongation. Recruited by REST to neuronal genes that contain RE-1 elements, leading to neuronal gene silencing in non-neuronal cells. May contribute to the development of sarcomas.

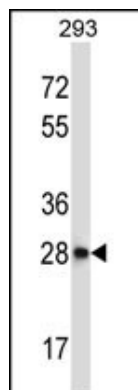
## References

---

- Lamesch, P., et al. Genomics 89(3):307-315(2007)  
Sapkota, G., et al. J. Biol. Chem. 281(52):40412-40419(2006)  
Thompson, J., et al. EMBO J. 25(12):2757-2767(2006)  
Yeo, M., et al. J. Biol. Chem. 278(28):26078-26085(2003)  
Su, Y.A., et al. Oncogene 15(11):1289-1294(1997)

## Images

---



CTDSP2 Antibody (N-term) (Cat. #AP14394a) western blot analysis in 293 cell line lysates (35ug/lane). This demonstrates the CTDSP2 antibody detected the CTDSP2 protein (arrow).

Please note: All products are 'FOR RESEARCH USE ONLY. NOT FOR USE IN DIAGNOSTIC OR THERAPEUTIC PROCEDURES'.