

# RCAN3 Antibody (C-term)

Affinity Purified Rabbit Polyclonal Antibody (Pab)

Catalog # AP14397b

## Product Information

---

|                          |                             |
|--------------------------|-----------------------------|
| <b>Application</b>       | WB, IHC-P, E                |
| <b>Primary Accession</b> | <a href="#">Q9UKA8</a>      |
| <b>Other Accession</b>   | <a href="#">NP_038469.1</a> |
| <b>Reactivity</b>        | Human                       |
| <b>Host</b>              | Rabbit                      |
| <b>Clonality</b>         | Polyclonal                  |
| <b>Isotype</b>           | Rabbit IgG                  |
| <b>Clone Names</b>       | RB34334                     |
| <b>Calculated MW</b>     | 27492                       |
| <b>Antigen Region</b>    | 194-222                     |

## Additional Information

---

|                           |  |
|---------------------------|--|
| <b>Gene ID</b>            | 11123  |
| <b>Other Names</b>        | Calcipressin-3, Down syndrome candidate region 1-like protein 2, Myocyte-enriched calcineurin-interacting protein 3, MCIP3, Regulator of calcineurin 3, RCAN3, DSCR1L2       |
| <b>Target/Specificity</b> | This RCAN3 antibody is generated from rabbits immunized with a KLH conjugated synthetic peptide between 194-222 amino acids from the C-terminal region of human RCAN3.       |
| <b>Dilution</b>           | WB~~1:1000 IHC-P~~1:100~500 E~~Use at an assay dependent concentration.  |
| <b>Format</b>             | Purified polyclonal antibody supplied in PBS with 0.09% (W/V) sodium azide. This antibody is purified through a protein A column, followed by peptide affinity purification. |
| <b>Storage</b>            | Maintain refrigerated at 2-8°C for up to 2 weeks. For long term storage store at -20°C in small aliquots to prevent freeze-thaw cycles.                                      |
| <b>Precautions</b>        | RCAN3 Antibody (C-term) is for research use only and not for use in diagnostic or therapeutic procedures.  |

## Protein Information

---

|                 |         |
|-----------------|---------|
| <b>Name</b>     | RCAN3   |
| <b>Synonyms</b> | DSCR1L2 |

|                        |  |
|------------------------|--|
| <b>Function</b>        | Inhibits calcineurin-dependent transcriptional responses by binding to the catalytic domain of calcineurin A. Could play a role during central nervous system development (By similarity). |
| <b>Tissue Location</b> | Highest expression in heart, skeletal muscle kidney, liver and peripheral blood leukocytes. Lower expression in all other tissues  |

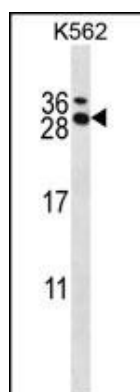
## Background

RCAN3 inhibits calcineurin-dependent transcriptional responses by binding to the catalytic domain of calcineurin A. Could play a role during central nervous system development (By similarity).

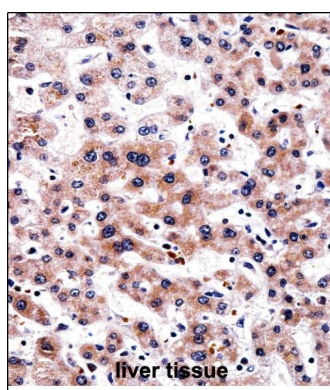
## References

Sales, K.J., et al. Biochim. Biophys. Acta 1793(12):1917-1928(2009)  
 Enjuanes, A., et al. Cancer Res. 68(24):10178-10186(2008)  
 Facchin, F., et al. Gene 407 (1-2), 159-168 (2008) :  
 Mulero, M.C., et al. Biochim. Biophys. Acta 1773(3):330-341(2007)  
 Olsen, J.V., et al. Cell 127(3):635-648(2006)

## Images



RCAN3 Antibody (C-term) (Cat. #AP14397b) western blot analysis in K562 cell line lysates (35ug/lane). This demonstrates the RCAN3 antibody detected the RCAN3 protein (arrow).



RCAN3 Antibody (C-term) (AP14397b) immunohistochemistry analysis in formalin fixed and paraffin embedded human liver tissue followed by peroxidase conjugation of the secondary antibody and DAB staining. This data demonstrates the use of RCAN3 Antibody (C-term) for immunohistochemistry. Clinical relevance has not been evaluated.

Please note: All products are 'FOR RESEARCH USE ONLY. NOT FOR USE IN DIAGNOSTIC OR THERAPEUTIC PROCEDURES'.