

# DSG1 Antibody (Center)

Affinity Purified Rabbit Polyclonal Antibody (Pab)

Catalog # AP14430c

## Product Information

---

<b>Application</b>	WB, IHC-P, E
<b>Primary Accession</b>	<a href="#">Q02413</a>
<b>Other Accession</b>	<a href="#">NP_001933.2</a>
<b>Reactivity</b>	Human
<b>Host</b>	Rabbit
<b>Clonality</b>	Polyclonal
<b>Isotype</b>	Rabbit IgG
<b>Clone Names</b>	RB34419
<b>Calculated MW</b>	113748
<b>Antigen Region</b>	471-499

## Additional Information

---

<b>Gene ID</b>	1828
<b>Other Names</b>	Desmoglein-1, Cadherin family member 4, Desmosomal glycoprotein 1, DG1, DGI, Pemphigus foliaceus antigen, DSG1, CDHF4
<b>Target/Specificity</b>	This DSG1 antibody is generated from rabbits immunized with a KLH conjugated synthetic peptide between 471-499 amino acids from the Central region of human DSG1.
<b>Dilution</b>	WB~~1:1000 IHC-P~~1:100~500 E~~Use at an assay dependent concentration.
<b>Format</b>	Purified polyclonal antibody supplied in PBS with 0.09% (W/V) sodium azide. This antibody is purified through a protein A column, followed by peptide affinity purification.
<b>Storage</b>	Maintain refrigerated at 2-8°C for up to 2 weeks. For long term storage store at -20°C in small aliquots to prevent freeze-thaw cycles.
<b>Precautions</b>	DSG1 Antibody (Center) is for research use only and not for use in diagnostic or therapeutic procedures.

## Protein Information

---

<b>Name</b>	DSG1
<b>Synonyms</b>	CDHF4
<b>Function</b>	Component of intercellular desmosome junctions (PubMed: <a href="#">34368962</a> ).

Involved in the interaction of plaque proteins and intermediate filaments mediating cell-cell adhesion (PubMed:[19717567](#)).

#### Cellular Location

Cell membrane; Single-pass type I membrane protein {ECO:0000250|UniProtKB:Q7TSF1} Cell junction, desmosome. Cytoplasm. Nucleus

#### Tissue Location

Expressed in all suprabasal layers of the epidermis, with the highest expression seen in the granular layer (at protein level).

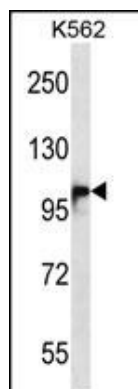
## Background

Desmosomes are cell-cell junctions between epithelial, myocardial and certain other cell types. Desmoglein 1 is a calcium-binding transmembrane glycoprotein component of desmosomes in vertebrate epithelial cells. Currently, three desmoglein subfamily members have been identified and all are members of the cadherin cell adhesion molecule superfamily. These desmoglein gene family members are located in a cluster on chromosome 18. The protein encoded by this gene has been identified as the autoantigen of the autoimmune skin blistering disease pemphigus foliaceus.

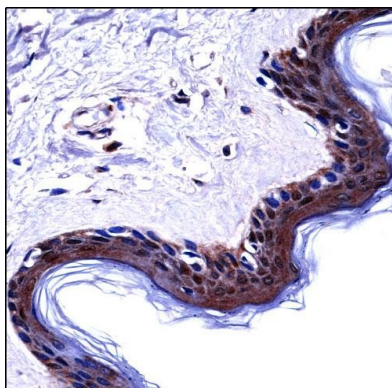
## References

Rothenberg, M.E., et al. Nat. Genet. 42(4):289-291(2010)  
Naoe, Y., et al. J. Dermatol. Sci. 57(3):192-198(2010)  
Qian, Y., et al. J. Invest. Dermatol. 129(12):2823-2834(2009)  
Spindler, V., et al. J. Biol. Chem. 284(44):30556-30564(2009)  
Getsios, S., et al. J. Cell Biol. 185(7):1243-1258(2009)

## Images



DSG1 Antibody (Center) (Cat. #AP14430c) western blot analysis in K562 cell line lysates (35ug/lane). This demonstrates the DSG1 antibody detected the DSG1 protein (arrow).



DSG1 Antibody (Center) (AP14430c) immunohistochemistry analysis in formalin fixed and paraffin embedded human skin tissue followed by peroxidase conjugation of the secondary antibody and DAB staining. This data demonstrates the use of DSG1 Antibody (Center) for immunohistochemistry. Clinical relevance has not been evaluated.

## Citations

---

- [The interaction between Staphylococcus aureus SdrD and desmoglein 1 is important for adhesion to host cells.](#)

Please note: All products are 'FOR RESEARCH USE ONLY. NOT FOR USE IN DIAGNOSTIC OR THERAPEUTIC PROCEDURES'.