

GTF2E1 Antibody (N-term)

Affinity Purified Rabbit Polyclonal Antibody (Pab)

Catalog # AP14432a

Product Information

Application	WB, IHC-P, E
Primary Accession	P29083
Other Accession	A6QLI8 , NP_005504.2
Reactivity	Human, Mouse
Predicted	Bovine
Host	Rabbit
Clonality	Polyclonal
Isotype	Rabbit IgG
Clone Names	RB34597
Calculated MW	49452
Antigen Region	93-121

Additional Information

Gene ID	2960
Other Names	General transcription factor IIE subunit 1, General transcription factor IIE 56 kDa subunit, Transcription initiation factor IIE subunit alpha, TFIIE-alpha, GTF2E1, TF2E1
Target/Specificity	This GTF2E1 antibody is generated from rabbits immunized with a KLH conjugated synthetic peptide between 93-121 amino acids from the N-terminal region of human GTF2E1.
Dilution	WB~~1:1000 IHC-P~~1:100~500 E~~Use at an assay dependent concentration.
Format	Purified polyclonal antibody supplied in PBS with 0.09% (W/V) sodium azide. This antibody is purified through a protein A column, followed by peptide affinity purification.
Storage	Maintain refrigerated at 2-8°C for up to 2 weeks. For long term storage store at -20°C in small aliquots to prevent freeze-thaw cycles.
Precautions	GTF2E1 Antibody (N-term) is for research use only and not for use in diagnostic or therapeutic procedures.

Protein Information

Name	GTF2E1
Synonyms	TF2E1

Function	Recruits TFIIH to the initiation complex and stimulates the RNA polymerase II C-terminal domain kinase and DNA-dependent ATPase activities of TFIIH. Both TFIIH and TFIIIE are required for promoter clearance by RNA polymerase.
Cellular Location	Nucleus

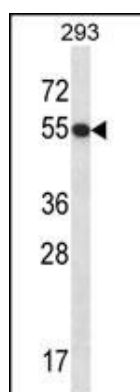
Background

Recruits TFIIH to the initiation complex and stimulates the RNA polymerase II C-terminal domain kinase and DNA-dependent ATPase activities of TFIIH. Both TFIIH and TFIIIE are required for promoter clearance by RNA polymerase.

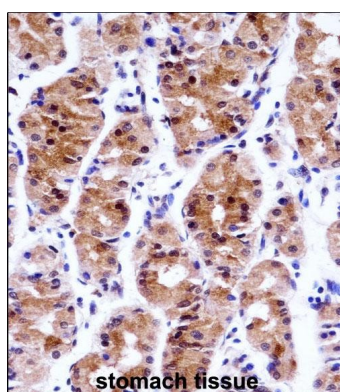
References

Vega, A., et al. Gynecol. Oncol. 112(1):210-214(2009)
 Okuda, M., et al. EMBO J. 27(7):1161-1171(2008)
 Di Lello, P., et al. Proc. Natl. Acad. Sci. U.S.A. 105(1):106-111(2008)
 Jawhari, A., et al. EMBO Rep. 7(5):500-505(2006)
 Okuda, M., et al. J. Biol. Chem. 279(49):51395-51403(2004)

Images



GTF2E1 Antibody (N-term) (Cat. #AP14432a) western blot analysis in 293 cell line lysates (35ug/lane). This demonstrates the GTF2E1 antibody detected the GTF2E1 protein (arrow).



GTF2E1 Antibody (N-term) (AP14432a) immunohistochemistry analysis in formalin fixed and paraffin embedded human stomach tissue followed by peroxidase conjugation of the secondary antibody and DAB staining. This data demonstrates the use of GTF2E1 Antibody (N-term) for immunohistochemistry. Clinical relevance has not been evaluated.

Please note: All products are 'FOR RESEARCH USE ONLY. NOT FOR USE IN DIAGNOSTIC OR THERAPEUTIC PROCEDURES'.