

Mouse Map2k3 Antibody (Center)

Affinity Purified Rabbit Polyclonal Antibody (Pab)

Catalog # AP14441c

Product Information

Application	WB, E
Primary Accession	O09110
Other Accession	NP_032954.1
Reactivity	Human, Mouse
Host	Rabbit
Clonality	Polyclonal
Isotype	Rabbit IgG
Clone Names	RB34808
Calculated MW	39296
Antigen Region	132-160

Additional Information

Gene ID	26397
Other Names	Dual specificity mitogen-activated protein kinase kinase 3, MAP kinase kinase 3, MAPKK 3, MAPK/ERK kinase 3, MEK 3, Map2k3, Mkk3, Prkmk3
Target/Specificity	This Mouse Map2k3 antibody is generated from rabbits immunized with a KLH conjugated synthetic peptide between 132-160 amino acids from the Central region of mouse Map2k3.
Dilution	WB~~1:1000 E~~Use at an assay dependent concentration.
Format	Purified polyclonal antibody supplied in PBS with 0.09% (W/V) sodium azide. This antibody is purified through a protein A column, followed by peptide affinity purification.
Storage	Maintain refrigerated at 2-8°C for up to 2 weeks. For long term storage store at -20°C in small aliquots to prevent freeze-thaw cycles.
Precautions	Mouse Map2k3 Antibody (Center) is for research use only and not for use in diagnostic or therapeutic procedures.

Protein Information

Name	Map2k3
Synonyms	Mkk3, Prkmk3
Function	Dual specificity kinase. Is activated by cytokines and environmental stress in

vivo. Catalyzes the concomitant phosphorylation of a threonine and a tyrosine residue in the MAP kinase p38. Part of a signaling cascade that begins with the activation of the adrenergic receptor ADRA1B and leads to the activation of MAPK14.

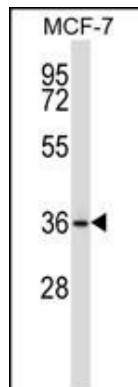
Background

Dual specificity kinase. Is activated by cytokines and environmental stress in vivo. Catalyzes the concomitant phosphorylation of a threonine and a tyrosine residue in the MAP kinase p38 (By similarity).

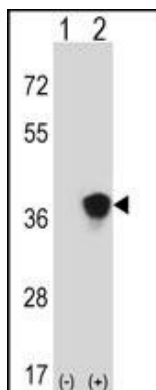
References

Yang, Z., et al. J. Immunol. 185(10):6205-6213(2010)
Remy, G., et al. Cell. Signal. 22(4):660-667(2010)
Behren, A., et al. Oncogene 29(10):1519-1530(2010)
Nagelin, M.H., et al. J. Biol. Chem. 284(45):31303-31314(2009)
Yoshizawa, T., et al. J. Immunol. 183(2):1360-1367(2009)

Images

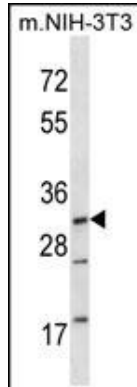
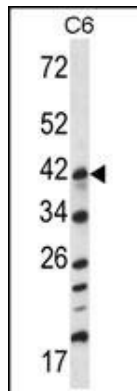


Mouse Map2k3 Antibody (Center) (Cat. #AP14441c) western blot analysis in MCF-7 cell line lysates (35ug/lane). This demonstrates the Map2k3 antibody detected the Map2k3 protein (arrow).



Western blot analysis of Map2k3 (arrow) using rabbit polyclonal Mouse Map2k3 Antibody (Center) (Cat. #AP14441c). 293 cell lysates (2 ug/lane) either nontransfected (Lane 1) or transiently transfected (Lane 2) with the Map2k3 gene.

Mouse Map2k3 Antibody (Center) (Cat. #AP14441c) western blot analysis in C6 cell line lysates (35ug/lane). This demonstrates the Map2k3 antibody detected the Map2k3 protein (arrow).



Mouse Map2k3 Antibody (Center) (Cat. #AP14441c)
western blot analysis in mouse NIH-3T3 cell line lysates
(35ug/lane). This demonstrates the Map2k3 antibody
detected the Map2k3 protein (arrow).

Please note: All products are 'FOR RESEARCH USE ONLY. NOT FOR USE IN DIAGNOSTIC OR THERAPEUTIC PROCEDURES'.