

OR6Q1 Antibody (C-term)

Affinity Purified Rabbit Polyclonal Antibody (Pab)

Catalog # AP14488b

Product Information

Application	WB, E
Primary Accession	Q8NGQ2
Other Accession	NP_001005186.2
Reactivity	Human
Host	Rabbit
Clonality	Polyclonal
Isotype	Rabbit IgG
Clone Names	RB33236
Calculated MW	35736
Antigen Region	279-307

Additional Information

Gene ID	219952
Other Names	Olfactory receptor 6Q1, Olfactory receptor OR11-226, OR6Q1
Target/Specificity	This OR6Q1 antibody is generated from rabbits immunized with a KLH conjugated synthetic peptide between 279-307 amino acids from the C-terminal region of human OR6Q1.
Dilution	WB~~1:1000 E~~Use at an assay dependent concentration.
Format	Purified polyclonal antibody supplied in PBS with 0.09% (W/V) sodium azide. This antibody is purified through a protein A column, followed by peptide affinity purification.
Storage	Maintain refrigerated at 2-8°C for up to 2 weeks. For long term storage store at -20°C in small aliquots to prevent freeze-thaw cycles.
Precautions	OR6Q1 Antibody (C-term) is for research use only and not for use in diagnostic or therapeutic procedures.

Protein Information

Name	OR6Q1
Function	Odorant receptor.
Cellular Location	Cell membrane; Multi-pass membrane protein.

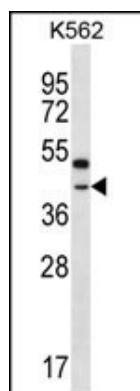
Background

Olfactory receptors interact with odorant molecules in the nose, to initiate a neuronal response that triggers the perception of a smell. The olfactory receptor proteins are members of a large family of G-protein-coupled receptors (GPCR) arising from single coding-exon genes. Olfactory receptors share a 7-transmembrane domain structure with many neurotransmitter and hormone receptors and are responsible for the recognition and G protein-mediated transduction of odorant signals. The olfactory receptor gene family is the largest in the genome. The nomenclature assigned to the olfactory receptor genes and proteins for this organism is independent of other organisms.

References

Malnic, B., et al. Proc. Natl. Acad. Sci. U.S.A. 101(8):2584-2589(2004)
Fuchs, T., et al. Genomics 80(3):295-302(2002)

Images



OR6Q1 Antibody (C-term) (Cat. #AP14488b) western blot analysis in K562 cell line lysates (35ug/lane). This demonstrates the OR6Q1 antibody detected the OR6Q1 protein (arrow).

Please note: All products are 'FOR RESEARCH USE ONLY. NOT FOR USE IN DIAGNOSTIC OR THERAPEUTIC PROCEDURES'.