

# BCAS2 Antibody (N-term)

Affinity Purified Rabbit Polyclonal Antibody (Pab)

Catalog # AP14509a

## Product Information

---

<b>Application</b>	WB, E
<b>Primary Accession</b>	<a href="#">Q75934</a>
<b>Other Accession</b>	<a href="#">Q9D287</a> , <a href="#">Q5RKQ0</a> , <a href="#">NP_005863.1</a>
<b>Reactivity</b>	Human
<b>Predicted</b>	Zebrafish, Mouse
<b>Host</b>	Rabbit
<b>Clonality</b>	Polyclonal
<b>Isotype</b>	Rabbit IgG
<b>Clone Names</b>	RB34263
<b>Calculated MW</b>	26131
<b>Antigen Region</b>	21-49

## Additional Information

---

<b>Gene ID</b>	10286
<b>Other Names</b>	Pre-mRNA-splicing factor SPF27, Breast carcinoma-amplified sequence 2, DNA amplified in mammary carcinoma 1 protein, Spliceosome-associated protein SPF 27, BCAS2, DAM1
<b>Target/Specificity</b>	This BCAS2 antibody is generated from rabbits immunized with a KLH conjugated synthetic peptide between 21-49 amino acids from the N-terminal region of human BCAS2.
<b>Dilution</b>	WB~~1:1000 E~~Use at an assay dependent concentration.
<b>Format</b>	Purified polyclonal antibody supplied in PBS with 0.09% (W/V) sodium azide. This antibody is purified through a protein A column, followed by peptide affinity purification.
<b>Storage</b>	Maintain refrigerated at 2-8°C for up to 2 weeks. For long term storage store at -20°C in small aliquots to prevent freeze-thaw cycles.
<b>Precautions</b>	BCAS2 Antibody (N-term) is for research use only and not for use in diagnostic or therapeutic procedures.

## Protein Information

---

<b>Name</b>	BCAS2
<b>Synonyms</b>	DAM1 {ECO:0000303   PubMed:10403562}

<b>Function</b>	Required for pre-mRNA splicing as component of the activated spliceosome (PubMed: <a href="#">28076346</a> , PubMed: <a href="#">28502770</a> , PubMed: <a href="#">29301961</a> , PubMed: <a href="#">29360106</a> , PubMed: <a href="#">30705154</a> ). Component of the PRP19-CDC5L complex that forms an integral part of the spliceosome and is required for activating pre-mRNA splicing. May have a scaffolding role in the spliceosome assembly as it contacts all other components of the core complex. The PRP19-CDC5L complex may also play a role in the response to DNA damage (DDR).
<b>Cellular Location</b>	Nucleus. Nucleus, nucleolus
<b>Tissue Location</b>	Ubiquitously expressed.

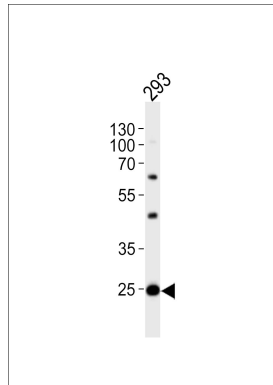
## Background

BCAS2 is involved in mRNA splicing (By similarity).

## References

Kuo, P.C., et al. Cancer Res. 69(23):8877-8885(2009)  
Ewing, R.M., et al. Mol. Syst. Biol. 3, 89 (2007) :  
Qi, C., et al. Biochem. Biophys. Res. Commun. 328(2):393-398(2005)  
Lee, S., et al. Cancer Lett. 188 (1-2), 121-126 (2002) :  
Maass, N., et al. Cancer Lett. 185(2):219-223(2002)

## Images



Western blot analysis of lysate from 293 cell line, using BCAS2 Antibody (N-term)(Cat. #AP14509a). AP14509a was diluted at 1:500. A goat anti-rabbit IgG H&L(HRP) at 1:10000 dilution was used as the secondary antibody. Lysate at 20ug.

Please note: All products are 'FOR RESEARCH USE ONLY. NOT FOR USE IN DIAGNOSTIC OR THERAPEUTIC PROCEDURES'.