

# ADAM32 Antibody (N-term)

Affinity Purified Rabbit Polyclonal Antibody (Pab)

Catalog # AP14513a

## Product Information

---

Application	WB, E
Primary Accession	<a href="#">Q8TC27</a>
Other Accession	<a href="#">NP_659441.3</a>
Reactivity	Human
Host	Rabbit
Clonality	Polyclonal
Isotype	Rabbit IgG
Clone Names	RB34303
Calculated MW	87948
Antigen Region	141-169

## Additional Information

---

Gene ID	203102
Other Names	Disintegrin and metalloproteinase domain-containing protein 32, ADAM 32, ADAM32
Target/Specificity	This ADAM32 antibody is generated from rabbits immunized with a KLH conjugated synthetic peptide between 141-169 amino acids from the N-terminal region of human ADAM32.
Dilution	WB~~1:1000 E~~Use at an assay dependent concentration.
Format	Purified polyclonal antibody supplied in PBS with 0.09% (W/V) sodium azide. This antibody is purified through a protein A column, followed by peptide affinity purification.
Storage	Maintain refrigerated at 2-8°C for up to 2 weeks. For long term storage store at -20°C in small aliquots to prevent freeze-thaw cycles.
Precautions	ADAM32 Antibody (N-term) is for research use only and not for use in diagnostic or therapeutic procedures.

## Protein Information

---

Name	ADAM32
Function	May play a role in sperm development and fertilization This is a non-catalytic metalloprotease-like protein.

<b>Cellular Location</b>	Membrane; Single-pass type I membrane protein
<b>Tissue Location</b>	Testis specific..

## Background

---

ADAM32 may play a role in sperm development and fertilization This is a non-catalytic metalloprotease-like protein (By similarity).

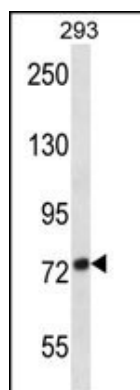
## References

---

Rose, J. Phd, et al. Mol. Med. (2010) In press :  
 Olsen, J.V., et al. Cell 127(3):635-648(2006)  
 Olsen, J.V., et al. Cell 127(3):635-648(2006)  
 Zhang, Z., et al. Protein Sci. 13(10):2819-2824(2004)  
 Clark, H.F., et al. Genome Res. 13(10):2265-2270(2003)

## Images

---



ADAM32 Antibody (N-term) (Cat. #AP14513a) western blot analysis in 293 cell line lysates (35ug/lane). This demonstrates the ADAM32 antibody detected the ADAM32 protein (arrow).

Please note: All products are 'FOR RESEARCH USE ONLY. NOT FOR USE IN DIAGNOSTIC OR THERAPEUTIC PROCEDURES'.