

# OSM Antibody (C-term)

Affinity Purified Rabbit Polyclonal Antibody (Pab)

Catalog # AP14525b

## Product Information

---

<b>Application</b>	WB, E
<b>Primary Accession</b>	<a href="#">P13725</a>
<b>Other Accession</b>	<a href="#">NP_065391.1</a>
<b>Reactivity</b>	Human
<b>Host</b>	Rabbit
<b>Clonality</b>	Polyclonal
<b>Isotype</b>	Rabbit IgG
<b>Clone Names</b>	RB34395
<b>Calculated MW</b>	28484
<b>Antigen Region</b>	214-243

## Additional Information

---

<b>Gene ID</b>	5008
<b>Other Names</b>	Oncostatin-M, OSM, OSM
<b>Target/Specificity</b>	This OSM antibody is generated from rabbits immunized with a KLH conjugated synthetic peptide between 214-243 amino acids from the C-terminal region of human OSM.
<b>Dilution</b>	WB~~1:1000 E~~Use at an assay dependent concentration.
<b>Format</b>	Purified polyclonal antibody supplied in PBS with 0.09% (W/V) sodium azide. This antibody is purified through a protein A column, followed by peptide affinity purification.
<b>Storage</b>	Maintain refrigerated at 2-8°C for up to 2 weeks. For long term storage store at -20°C in small aliquots to prevent freeze-thaw cycles.
<b>Precautions</b>	OSM Antibody (C-term) is for research use only and not for use in diagnostic or therapeutic procedures.

## Protein Information

---

<b>Name</b>	OSM
<b>Function</b>	Growth regulator. Inhibits the proliferation of a number of tumor cell lines. Stimulates proliferation of AIDS-KS cells. It regulates cytokine production, including IL-6, G-CSF and GM-CSF from endothelial cells. Uses both type I OSM receptor (heterodimers composed of LIFR and IL6ST) and type II OSM

receptor (heterodimers composed of OSMR and IL6ST). Involved in the maturation of fetal hepatocytes, thereby promoting liver development and regeneration (By similarity).

**Cellular Location**

Secreted.

**Background**

---

Oncostatin M is a member of a cytokine family that includes leukemia-inhibitory factor, granulocyte colony-stimulating factor, and interleukin 6. This gene encodes a growth regulator which inhibits the proliferation of a number of tumor cell lines. It regulates cytokine production, including IL-6, G-CSF and GM-CSF from endothelial cells.

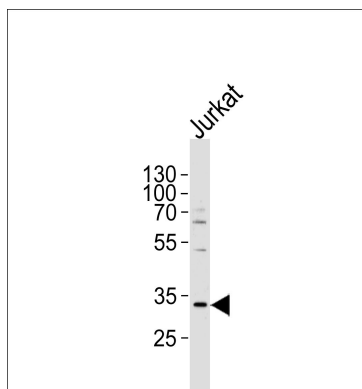
**References**

---

Bailey, S.D., et al. Diabetes Care 33(10):2250-2253(2010)  
Thorat Manojkumar, S., et al. Cytokine 50(3):248-252(2010)  
Pradeep, A.R., et al. Biomarkers 15(3):277-282(2010)  
Davila, S., et al. Genes Immun. 11(3):232-238(2010)  
Lee, G., et al. J. Obstet. Gynaecol. Res. 35(5):869-875(2009)

**Images**

---



Western blot analysis of lysate from Jurkat cell line, using OSM Antibody (C-term)(Cat. #AP14525b). AP14525b was diluted at 1:1000 at each lane. A goat anti-rabbit IgG H&L(HRP) at 1:5000 dilution was used as the secondary antibody. Lysate at 35ug per lane.

Please note: All products are 'FOR RESEARCH USE ONLY. NOT FOR USE IN DIAGNOSTIC OR THERAPEUTIC PROCEDURES'.