

PRPF31 Antibody (C-term)

Affinity Purified Rabbit Polyclonal Antibody (Pab)

Catalog # AP14542b

Product Information

Application	WB, E
Primary Accession	Q8WWY3
Other Accession	Q5U5C5 , Q8CCF0 , Q7SXM7 , NP_056444.3
Reactivity	Human
Predicted	Zebrafish, Mouse, Xenopus
Host	Rabbit
Clonality	Polyclonal
Isotype	Rabbit IgG
Clone Names	RB34436
Calculated MW	55456
Antigen Region	334-361

Additional Information

Gene ID	26121
Other Names	U4/U6 small nuclear ribonucleoprotein Prp31, Pre-mRNA-processing factor 31, Serologically defined breast cancer antigen NY-BR-99, U4/U6 snRNP 61 kDa protein, Protein 61K, hPrp31, PRPF31, PRP31
Target/Specificity	This PRPF31 antibody is generated from rabbits immunized with a KLH conjugated synthetic peptide between 334-361 amino acids from the C-terminal region of human PRPF31.
Dilution	WB~~1:1000 E~~Use at an assay dependent concentration.
Format	Purified polyclonal antibody supplied in PBS with 0.09% (W/V) sodium azide. This antibody is purified through a protein A column, followed by peptide affinity purification.
Storage	Maintain refrigerated at 2-8°C for up to 2 weeks. For long term storage store at -20°C in small aliquots to prevent freeze-thaw cycles.
Precautions	PRPF31 Antibody (C-term) is for research use only and not for use in diagnostic or therapeutic procedures.

Protein Information

Name	PRPF31 (HGNC:15446)
Synonyms	PRP31

Function	Involved in pre-mRNA splicing as component of the spliceosome (PubMed: 11867543 , PubMed: 20118938 , PubMed: 28781166). Required for the assembly of the U4/U5/U6 tri-snRNP complex, one of the building blocks of the spliceosome (PubMed: 11867543).
Cellular Location	Nucleus. Nucleus speckle. Nucleus, Cajal body. Note=Predominantly found in speckles and in Cajal bodies.
Tissue Location	Ubiquitously expressed.

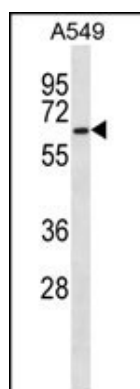
Background

This gene encodes a component of the spliceosome complex and is one of several retinitis pigmentosa-causing genes. When the gene product is added to the spliceosome complex, activation occurs.

References

Schneider, M., et al. Nat. Struct. Mol. Biol. 17(2):216-221(2010)
 Bujakowska, K., et al. Invest. Ophthalmol. Vis. Sci. 50(12):5927-5933(2009)
 Potkin, S.G., et al. PLoS ONE 4 (8), E6501 (2009) :
 Liu, S., et al. Science 316(5821):115-120(2007)
 Sullivan, L.S., et al. Invest. Ophthalmol. Vis. Sci. 47(10):4579-4588(2006)

Images



PRPF31 Antibody (C-term) (Cat. #AP14542b) western blot analysis in A549 cell line lysates (35ug/lane). This demonstrates the PRPF31 antibody detected the PRPF31 protein (arrow).

Please note: All products are 'FOR RESEARCH USE ONLY. NOT FOR USE IN DIAGNOSTIC OR THERAPEUTIC PROCEDURES'.