

SOCS4 Antibody (Center)

Affinity Purified Rabbit Polyclonal Antibody (Pab)

Catalog # AP14548c

Product Information

Application	WB, E
Primary Accession	Q8WXH5
Other Accession	NP_955453.1 , NP_543143.1
Reactivity	Human
Host	Rabbit
Clonality	Polyclonal
Isotype	Rabbit IgG
Clone Names	RB34490
Calculated MW	50623
Antigen Region	224-253

Additional Information

Gene ID	122809
Other Names	Suppressor of cytokine signaling 4, SOCS-4, Suppressor of cytokine signaling 7, SOCS-7, SOCS4, SOCS7
Target/Specificity	This SOCS4 antibody is generated from rabbits immunized with a KLH conjugated synthetic peptide between 224-253 amino acids from the Central region of human SOCS4.
Dilution	WB~~1:1000 E~~Use at an assay dependent concentration.
Format	Purified polyclonal antibody supplied in PBS with 0.09% (W/V) sodium azide. This antibody is purified through a protein A column, followed by peptide affinity purification.
Storage	Maintain refrigerated at 2-8°C for up to 2 weeks. For long term storage store at -20°C in small aliquots to prevent freeze-thaw cycles.
Precautions	SOCS4 Antibody (Center) is for research use only and not for use in diagnostic or therapeutic procedures.

Protein Information

Name	SOCS4
Synonyms	SOCS7
Function	SOCS family proteins form part of a classical negative feedback system that

regulates cytokine signal transduction. Substrate- recognition component of a SCF-like ECS (Elongin BC-CUL2/5-SOCS-box protein) E3 ubiquitin-protein ligase complex which mediates the ubiquitination and subsequent proteasomal degradation of target proteins. Inhibits EGF signaling by mediating the degradation of the Tyr-phosphorylated EGF receptor/EGFR.

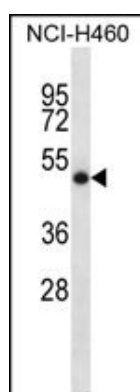
Background

The protein encoded by this gene contains a SH2 domain and a SOCS BOX domain. The protein thus belongs to the suppressor of cytokine signaling (SOCS), also known as STAT-induced STAT inhibitor (SSI), protein family. SOCS family members are known to be cytokine-inducible negative regulators of cytokine signaling. Two alternatively spliced transcript variants encoding the same protein have been found for this gene.

References

Hu, G., et al. J. Infect. Dis. 202(1):125-135(2010)
Han, S., et al. Hum. Immunol. 71(7):727-730(2010)
Rajaraman, P., et al. Cancer Epidemiol. Biomarkers Prev. 19(5):1356-1361(2010)
Sasi, W., et al. BMC Cancer 10, 178 (2010) :
Rajaraman, P., et al. Cancer Epidemiol. Biomarkers Prev. 18(5):1651-1658(2009)

Images



SOCS4 Antibody (Center) (Cat. #AP14548c) western blot analysis in NCI-H460 cell line lysates (35ug/lane). This demonstrates the SOCS4 antibody detected the SOCS4 protein (arrow).

Please note: All products are 'FOR RESEARCH USE ONLY. NOT FOR USE IN DIAGNOSTIC OR THERAPEUTIC PROCEDURES'.