

MIPEP Antibody (Center)

Purified Rabbit Polyclonal Antibody (Pab)

Catalog # AP1459c

Product Information

Application	WB, IHC-P, E
Primary Accession	Q99797
Reactivity	Human
Host	Rabbit
Clonality	Polyclonal
Isotype	Rabbit IgG
Clone Names	RB16564
Calculated MW	80641
Antigen Region	307-336

Additional Information

Gene ID	4285
Other Names	Mitochondrial intermediate peptidase, MIP, MIPEP, MIP
Target/Specificity	This MIPEP antibody is generated from rabbits immunized with a KLH conjugated synthetic peptide between 307-336 amino acids from the Central region of human MIPEP.
Dilution	WB~~1:1000 IHC-P~~1:100~500 E~~Use at an assay dependent concentration.
Format	Purified polyclonal antibody supplied in PBS with 0.09% (W/V) sodium azide. This antibody is prepared by Saturated Ammonium Sulfate (SAS) precipitation followed by dialysis against PBS.
Storage	Maintain refrigerated at 2-8°C for up to 2 weeks. For long term storage store at -20°C in small aliquots to prevent freeze-thaw cycles.
Precautions	MIPEP Antibody (Center) is for research use only and not for use in diagnostic or therapeutic procedures.

Protein Information

Name	MIPEP
Synonyms	MIP
Function	Cleaves proteins, imported into the mitochondrion, to their mature size.
Cellular Location	Mitochondrion matrix.

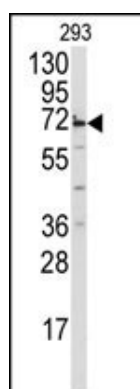
Background

MIPEP performs the final step in processing a specific class of nuclear-encoded proteins targeted to the mitochondrial matrix or inner membrane. This protein is primarily involved in the maturation of oxidative phosphorylation (OXPHOS)-related proteins. It may contribute to the functional effects of frataxin deficiency and the clinical manifestations of Friedreich ataxia.

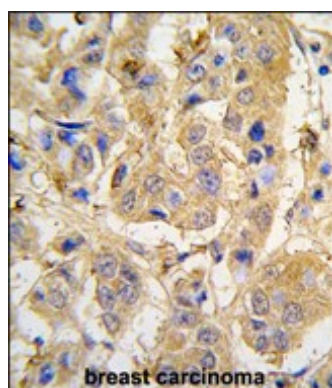
References

Chew A., Genomics 40:493-496(1997).

Images



Western blot analysis of anti-MIPEP Antibody (Center) (Cat.#AP1459c) in 293 cell line lysates (35ug/lane). MIPEP (arrow) was detected using the purified Pab.



Formalin-fixed and paraffin-embedded human breast carcinoma tissue reacted with MIPEP antibody (Center), which was peroxidase-conjugated to the secondary antibody, followed by DAB staining. This data demonstrates the use of this antibody for immunohistochemistry; clinical relevance has not been evaluated.

Please note: All products are 'FOR RESEARCH USE ONLY. NOT FOR USE IN DIAGNOSTIC OR THERAPEUTIC PROCEDURES'.