

TRA2B Antibody (Center)

Affinity Purified Rabbit Polyclonal Antibody (Pab)

Catalog # AP14688c

Product Information

Application	WB, IHC-P, E
Primary Accession	P62995
Other Accession	P62997 , P62996 , Q3ZBT6 , NP_004584.1
Reactivity	Human
Predicted	Bovine, Mouse, Rat
Host	Rabbit
Clonality	Polyclonal
Isotype	Rabbit IgG
Clone Names	RB34606
Calculated MW	33666
Antigen Region	208-237

Additional Information

Gene ID	6434
Other Names	Transformer-2 protein homolog beta, TRA-2 beta, TRA2-beta, hTRA2-beta, Splicing factor, arginine/serine-rich 10, Transformer-2 protein homolog B, TRA2B, SFRS10
Target/Specificity	This TRA2B antibody is generated from rabbits immunized with a KLH conjugated synthetic peptide between 208-237 amino acids from the Central region of human TRA2B.
Dilution	WB~~1:1000 IHC-P~~1:100~500 E~~Use at an assay dependent concentration.
Format	Purified polyclonal antibody supplied in PBS with 0.09% (W/V) sodium azide. This antibody is purified through a protein A column, followed by peptide affinity purification.
Storage	Maintain refrigerated at 2-8°C for up to 2 weeks. For long term storage store at -20°C in small aliquots to prevent freeze-thaw cycles.
Precautions	TRA2B Antibody (Center) is for research use only and not for use in diagnostic or therapeutic procedures.

Protein Information

Name	TRA2B (HGNC:10781)
Synonyms	SFRS10

Function	Sequence-specific RNA-binding protein which participates in the control of pre-mRNA splicing. Can either activate or suppress exon inclusion. Acts additively with RBMX to promote exon 7 inclusion of the survival motor neuron SMN2. Activates the splicing of MAPT/Tau exon 10. Alters pre-mRNA splicing patterns by antagonizing the effects of splicing regulators, like RBMX. Binds to the AG-rich SE2 domain in the SMN exon 7 RNA. Binds to pre-mRNA.
Cellular Location	Nucleus
Tissue Location	Highest expression in heart, skeletal muscle and pancreas. Less abundant in kidney, placenta and brain. Lowest expression in kidney and liver.

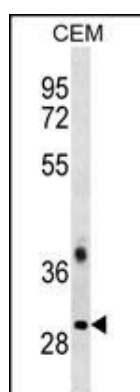
Background

TRA2B is a sequence-specific RNA-binding protein which participates in the control of pre-mRNA splicing.

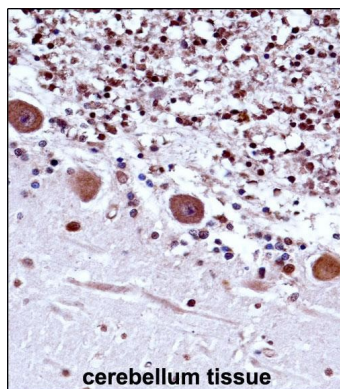
References

Benderska, N., et al. Biochim. Biophys. Acta 1799 (5-6), 448-453 (2010) :
 Thorleifsson, G., et al. Nat. Genet. 41(1):18-24(2009)
 Caporaso, N., et al. PLoS ONE 4 (2), E4653 (2009) :
 Gabriel, B., et al. Acta Obstet Gynecol Scand 88(2):216-221(2009)
 Miele, A., et al. J. Cell. Biochem. 102(1):136-148(2007)

Images



TRA2B Antibody (Center) (Cat. #AP14688c) western blot analysis in CEM cell line lysates (35ug/lane). This demonstrates the TRA2B antibody detected the TRA2B protein (arrow).



TRA2B Antibody (Center) (AP14688c) immunohistochemistry analysis in formalin fixed and paraffin embedded human cerebellum tissue followed by peroxidase conjugation of the secondary antibody and DAB staining. This data demonstrates the use of TRA2B Antibody (Center) for immunohistochemistry. Clinical relevance has not been evaluated.

Please note: All products are 'FOR RESEARCH USE ONLY. NOT FOR USE IN DIAGNOSTIC OR THERAPEUTIC PROCEDURES'.