

Mouse Mos Antibody (C-term)

Affinity Purified Rabbit Polyclonal Antibody (Pab)

Catalog # AP14693b

Product Information

Application	WB, E
Primary Accession	P00536
Other Accession	P00539
Reactivity	Rat, Mouse
Predicted	Rat
Host	Rabbit
Clonality	Polyclonal
Isotype	Rabbit IgG
Clone Names	RB34641
Calculated MW	37886
Antigen Region	301-329

Additional Information

Gene ID	17451
Other Names	Proto-oncogene serine/threonine-protein kinase mos, Oocyte maturation factor mos, Proto-oncogene c-Mos, Mos
Target/Specificity	This Mouse Mos antibody is generated from rabbits immunized with a KLH conjugated synthetic peptide between 301-329 amino acids from the C-terminal region of mouse Mos.
Dilution	WB~~1:1000 E~~Use at an assay dependent concentration.
Format	Purified polyclonal antibody supplied in PBS with 0.09% (W/V) sodium azide. This antibody is purified through a protein A column, followed by peptide affinity purification.
Storage	Maintain refrigerated at 2-8°C for up to 2 weeks. For long term storage store at -20°C in small aliquots to prevent freeze-thaw cycles.
Precautions	Mouse Mos Antibody (C-term) is for research use only and not for use in diagnostic or therapeutic procedures.

Protein Information

Name	Mos {ECO:0000312 MGI:MGI:97052}
Function	Serine/threonine kinase involved in the regulation of MAPK signaling. Is an activator of the ERK1/2 signaling cascade playing an essential role in the

stimulation of oocyte maturation.

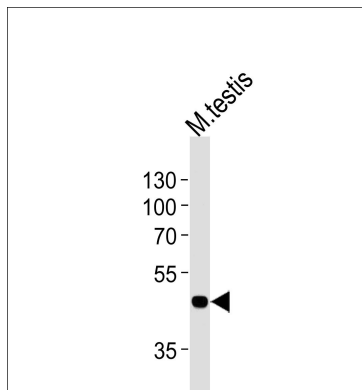
Cellular Location

Cytoplasm {ECO:0000250 | UniProtKB:P00540}.

Background

MOS is a proto oncogene (c-Mos) encoded protein serine/threonine kinase. MOS is a monomeric protein that indirectly activates MAP kinase (Erk1/2) by directly phosphorylating MAP kinase kinase (Mck, MAPKK, MKK). MOS is known as a cytostatic factor (CSF) and is also thought to arrest unfertilized amphibian and mammalian cells during M phase, thus regulating oocyte maturation. MOS is destroyed before fertilisation, after exit from meiosis II, making it a good marker for studies of eggs during oogenesis and maturation.

Images



Western blot analysis of lysate from mouse testis tissue lysate, using Mouse Mos Antibody (C-term)(Cat. #AP14693b). AP14693b was diluted at 1:1000 at each lane. A goat anti-rabbit IgG H&L(HRP) at 1:5000 dilution was used as the secondary antibody. Lysate at 35ug per lane.

Please note: All products are 'FOR RESEARCH USE ONLY. NOT FOR USE IN DIAGNOSTIC OR THERAPEUTIC PROCEDURES'.