

# C11orf20 Antibody (C-term)

Affinity Purified Rabbit Polyclonal Antibody (Pab)

Catalog # AP14718b

## Product Information

---

<b>Application</b>	WB, E
<b>Primary Accession</b>	<a href="#">Q9NTU4</a>
<b>Other Accession</b>	<a href="#">NP_001034585.1</a>
<b>Reactivity</b>	Human
<b>Host</b>	Rabbit
<b>Clonality</b>	Polyclonal
<b>Isotype</b>	Rabbit IgG
<b>Clone Names</b>	RB34885
<b>Calculated MW</b>	22839
<b>Antigen Region</b>	172-200

## Additional Information

---

<b>Gene ID</b>	25858
<b>Other Names</b>	Testis-expressed sequence 40 protein, TEX40, C11orf20
<b>Target/Specificity</b>	This C11orf20 antibody is generated from rabbits immunized with a KLH conjugated synthetic peptide between 172-200 amino acids from the C-terminal region of human C11orf20.
<b>Dilution</b>	WB~~1:1000 E~~Use at an assay dependent concentration.
<b>Format</b>	Purified polyclonal antibody supplied in PBS with 0.09% (W/V) sodium azide. This antibody is purified through a protein A column, followed by peptide affinity purification.
<b>Storage</b>	Maintain refrigerated at 2-8°C for up to 2 weeks. For long term storage store at -20°C in small aliquots to prevent freeze-thaw cycles.
<b>Precautions</b>	C11orf20 Antibody (C-term) is for research use only and not for use in diagnostic or therapeutic procedures.

## Protein Information

---

<b>Name</b>	CATSPERZ ( <a href="#">HGNC:19231</a> )
<b>Function</b>	Auxiliary component of the CatSper complex, a complex involved in sperm cell hyperactivation. Sperm cell hyperactivation is needed for sperm motility which is essential late in the preparation of sperm for fertilization. Required for a distribution of the CatSper complex in linear quadrilateral nanodomains

along the flagellum, maximizing fertilization inside the mammalian female reproductive tract. Together with EFCAB9, associates with the CatSper channel pore and is required for the two-row structure of each single CatSper channel.

### Cellular Location

Cell projection, cilium, flagellum membrane; Peripheral membrane protein. Note=Specifically located in the principal piece of sperm tail (PubMed:28226241). Although it does not contain a transmembrane domain, localizes with the CatSper complex at the flagellum membrane (PubMed:28226241).

## Background

---

C11orf20 may be involved in late spermatogenesis (By similarity).

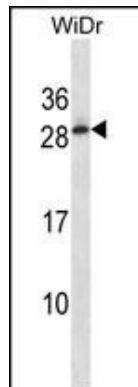
## References

---

Simpson, J.C., et al. EMBO Rep. 1(3):287-292(2000)

## Images

---



C11orf20 Antibody (C-term) (Cat. #AP14718b) western blot analysis in WiDr cell line lysates (35ug/lane). This demonstrates the C11orf20 antibody detected the C11orf20 protein (arrow).

Please note: All products are 'FOR RESEARCH USE ONLY. NOT FOR USE IN DIAGNOSTIC OR THERAPEUTIC PROCEDURES'.