

GRAP2 Antibody (Center)

Affinity Purified Rabbit Polyclonal Antibody (Pab)

Catalog # AP14745c

Product Information

Application	WB, E
Primary Accession	O75791
Other Accession	NP_004801.1
Reactivity	Human
Host	Rabbit
Clonality	Polyclonal
Isotype	Rabbit IgG
Clone Names	RB34946
Calculated MW	37909
Antigen Region	131-159

Additional Information

Gene ID	9402
Other Names	GRB2-related adapter protein 2, Adapter protein GRID, GRB-2-like protein, GRB2L, GRBLG, GRBX, Grf40 adapter protein, Grf-40, Growth factor receptor-binding protein, Hematopoietic cell-associated adapter protein GrpL, P38, Protein GADS, SH3-SH2-SH3 adapter Mona, GRAP2, GADS, GRB2L, GRID
Target/Specificity	This GRAP2 antibody is generated from rabbits immunized with a KLH conjugated synthetic peptide between 131-159 amino acids from the Central region of human GRAP2.
Dilution	WB~~1:1000 E~~Use at an assay dependent concentration.
Format	Purified polyclonal antibody supplied in PBS with 0.09% (W/V) sodium azide. This antibody is purified through a protein A column, followed by peptide affinity purification.
Storage	Maintain refrigerated at 2-8°C for up to 2 weeks. For long term storage store at -20°C in small aliquots to prevent freeze-thaw cycles.
Precautions	GRAP2 Antibody (Center) is for research use only and not for use in diagnostic or therapeutic procedures.

Protein Information

Name	GRAP2
Synonyms	GADS, GRB2L, GRID

Function Interacts with SLP-76 to regulate NF-AT activation. Binds to tyrosine-phosphorylated shc.

Cellular Location Nucleus. Cytoplasm. Endosome

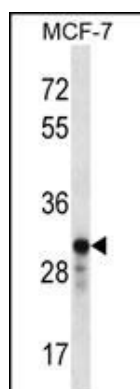
Background

This gene encodes a member of the GRB2/Sem5/Drk family. This member is an adaptor-like protein involved in leukocyte-specific protein-tyrosine kinase signaling. Like its related family member, GRB2-related adaptor protein (GRAP), this protein contains an SH2 domain flanked by two SH3 domains. This protein interacts with other proteins, such as GRB2-associated binding protein 1 (GAB1) and the SLP-76 leukocyte protein (LCP2), through its SH3 domains. Transcript variants utilizing alternative polyA sites exist.

References

Rose, J.E., et al. Mol. Med. 16 (7-8), 247-253 (2010) :
Preisinger, C., et al. Cell. Signal. 22(5):848-856(2010)
Davila, S., et al. Genes Immun. 11(3):232-238(2010)
Segat, L., et al. J. Gastroenterol. Hepatol. 24(12):1840-1846(2009)
Ludwig, L., et al. Cancer Lett. 275(2):194-197(2009)

Images



GRAP2 Antibody (Center) (Cat. #AP14745c) western blot analysis in MCF-7 cell line lysates (35ug/lane). This demonstrates the GRAP2 antibody detected the GRAP2 protein (arrow).

Please note: All products are 'FOR RESEARCH USE ONLY. NOT FOR USE IN DIAGNOSTIC OR THERAPEUTIC PROCEDURES'.