

TGF Beta 2 Antibody (C-term)

Purified Rabbit Polyclonal Antibody (Pab)

Catalog # AP1476b

Product Information

| | |
|--------------------------|------------------------|
| Application | WB, IHC-P, E |
| Primary Accession | P61812 |
| Reactivity | Human |
| Host | Rabbit |
| Clonality | Polyclonal |
| Isotype | Rabbit IgG |
| Calculated MW | 47748 |
| Antigen Region | 277-306 |

Additional Information

| | |
|---------------------------|---|
| Gene ID | 7042 |
| Other Names | Transforming growth factor beta-2, TGF-beta-2, BSC-1 cell growth inhibitor, Cetermin, Glioblastoma-derived T-cell suppressor factor, G-TSF, Polyergin, Latency-associated peptide, LAP, TGFB2 |
| Target/Specificity | This TGF Beta 2 antibody is generated from rabbits immunized with a KLH conjugated synthetic peptide between 277-306 amino acids from the C-terminal region of human TGF Beta 2. |
| Dilution | WB~~1:1000 IHC-P~~1:100~500 E~~Use at an assay dependent concentration. |
| Format | Purified polyclonal antibody supplied in PBS with 0.05% (V/V) Proclin 300. This antibody is purified through a protein A column, followed by peptide affinity purification. |
| Storage | Maintain refrigerated at 2-8°C for up to 2 weeks. For long term storage store at -20°C in small aliquots to prevent freeze-thaw cycles. |
| Precautions | TGF Beta 2 Antibody (C-term) is for research use only and not for use in diagnostic or therapeutic procedures. |

Protein Information

| | |
|-----------------|--|
| Name | TGFB2 |
| Function | [Transforming growth factor beta-2 proprotein]: Precursor of the Latency-associated peptide (LAP) and Transforming growth factor beta-2 (TGF-beta-2) chains, which constitute the regulatory and active subunit of TGF-beta-2, respectively. |

Cellular Location

[Latency-associated peptide]: Secreted, extracellular space, extracellular matrix {ECO:0000250 | UniProtKB:P01137}

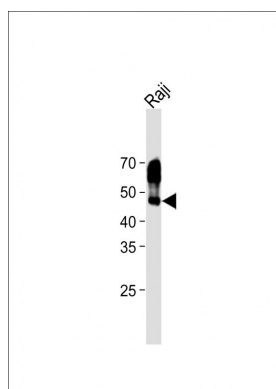
Background

Transforming growth factor-beta 2 (TGF- β 2) is a cytokine that performs many cellular functions and has a vital role during embryonic development. It is an extracellular glycosylated protein. It is known to suppress the effects of interleukin dependent T-cell tumors. There are two named isoforms of this protein, created by alternative splicing of the same gene.

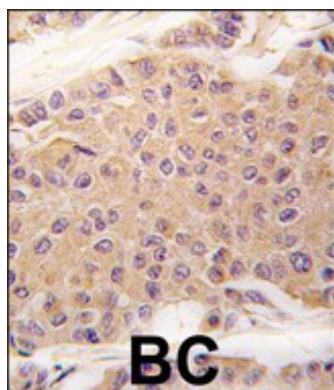
References

Hatsushika,K., Clin. Exp. Allergy 37 (8), 1165-1174 (2007) Jimi,S., Int. J. Oncol. 31 (2), 397-404 (2007) Ito,T., Biochem. Biophys. Res. Commun. 359 (1), 108-114 (2007) Yao,K., Mol. Vis. 13, 1769-1776 (2007)

Images



All lanes: Anti-TGFB2 Antibody (C-term) at 1:1000 dilution + Raji whole cell lysate Lysates/proteins at 20 μ g per lane. Secondary: Goat Anti-Rabbit IgG, (H+L), Peroxidase conjugated (ASP1615) at 1/15000 dilution. Observed band size: 48 KDa Blocking/Dilution buffer: 5% NFDM/TBST.



Formalin-fixed and paraffin-embedded human breast carcinoma tissue reacted with TGFB2 antibody (C-term)(Cat.#AP1476b), which was peroxidase-conjugated to the secondary antibody, followed by DAB staining. This data demonstrates the use of this antibody for immunohistochemistry; clinical relevance has not been evaluated.

Please note: All products are 'FOR RESEARCH USE ONLY. NOT FOR USE IN DIAGNOSTIC OR THERAPEUTIC PROCEDURES'.