

TGIF2 Antibody (C-term)

Affinity Purified Rabbit Polyclonal Antibody (Pab)

Catalog # AP14807b

Product Information

Application	IHC-P-Leica, WB, E
Primary Accession	Q9GZN2
Other Accession	NP_068581.1
Reactivity	Human, Mouse
Host	Rabbit
Clonality	Polyclonal
Isotype	Rabbit IgG
Calculated MW	25878
Antigen Region	171-199

Additional Information

Gene ID	60436
Other Names	Homeobox protein TGIF2, 5'-TG-3'-interacting factor 2, TGF-beta-induced transcription factor 2, TGFB-induced factor 2, TGIF2
Target/Specificity	This TGIF2 antibody is generated from rabbits immunized with a KLH conjugated synthetic peptide between 171-199 amino acids from the C-terminal region of human TGIF2.
Dilution	IHC-P-Leica~~1:500 WB~~1:1000 E~~Use at an assay dependent concentration.
Format	Purified polyclonal antibody supplied in PBS with 0.09% (W/V) sodium azide. This antibody is purified through a protein A column, followed by peptide affinity purification.
Storage	Maintain refrigerated at 2-8°C for up to 2 weeks. For long term storage store at -20°C in small aliquots to prevent freeze-thaw cycles.
Precautions	TGIF2 Antibody (C-term) is for research use only and not for use in diagnostic or therapeutic procedures.

Protein Information

Name	TGIF2
Function	Transcriptional repressor, which probably repress transcription by binding directly the 5'-CTGTCAA-3' DNA sequence or by interacting with TGF-beta activated SMAD proteins. Probably represses transcription via the recruitment

of histone deacetylase proteins.

Cellular Location

Nucleus. Note=Excluded from nucleoli.

Tissue Location

Widely expressed. Highly expressed in heart, kidney and testis. Weakly expressed in brain and prostate

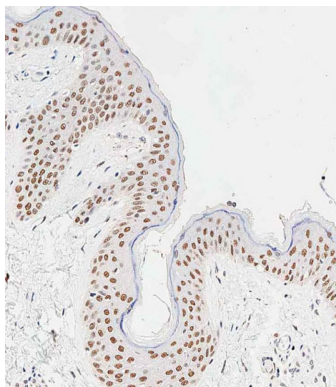
Background

The protein encoded by this gene is a DNA-binding homeobox protein and a transcriptional repressor. The encoded protein appears to repress transcription by recruiting histone deacetylases to TGF beta-responsive genes. This gene is amplified and overexpressed in some ovarian cancers, and mutations in this gene can cause holoprosencephaly.

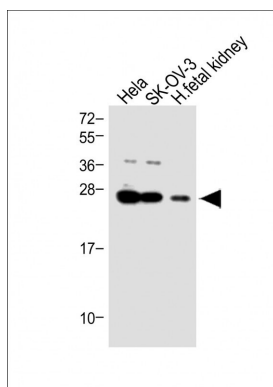
References

- Watanabe, T., et al. Jpn. J. Cancer Res. 93(10):1114-1122(2002)
Deloukas, P., et al. Nature 414(6866):865-871(2001)
Melhuish, T.A., et al. J. Biol. Chem. 276(34):32109-32114(2001)
Imoto, I., et al. Biochem. Biophys. Res. Commun. 276(1):264-270(2000)

Images



Immunohistochemical analysis of paraffin-embedded human skin tissue using AP14807b performed on the Leica® BOND RXm. Tissue was fixed with formaldehyde at room temperature, antigen retrieval was by heat mediation with a EDTA buffer (pH9. 0). Samples were incubated with primary antibody(1:500) for 1 hours at room temperature. A undiluted biotinylated CRF Anti-Polyvalent HRP Polymer antibody was used as the secondary antibody.



All lanes : Anti-TGIF2 Antibody (C-term) at 1:1000 dilution
Lane 1: HeLa whole cell lysate Lane 2: SK-OV-3 whole cell lysate Lane 3: Human fetal kidney lysate Lysates/proteins at 20 µg per lane. Secondary Goat Anti-Rabbit IgG, (H+L), Peroxidase conjugated at 1/10000 dilution. Predicted band size : 26 kDa Blocking/Dilution buffer: 5% NFDM/TBST.

Please note: All products are 'FOR RESEARCH USE ONLY. NOT FOR USE IN DIAGNOSTIC OR THERAPEUTIC PROCEDURES'.