

SLC45A3 Antibody (Center)

Affinity Purified Rabbit Polyclonal Antibody (Pab)

Catalog # AP14808c

Product Information

Application	WB, E
Primary Accession	Q96JT2
Other Accession	Q8K0H7 , NP_149093.1
Reactivity	Mouse
Host	Rabbit
Clonality	Polyclonal
Isotype	Rabbit IgG
Clone Names	RB34293
Calculated MW	59323
Antigen Region	290-319

Additional Information

Gene ID	85414
Other Names	Solute carrier family 45 member 3, Prostate cancer-associated protein 6, Prostein, SLC45A3, PCANAP6, PRST
Target/Specificity	This SLC45A3 antibody is generated from rabbits immunized with a KLH conjugated synthetic peptide between 290-319 amino acids from the Central region of human SLC45A3.
Dilution	WB~~1:1000 E~~Use at an assay dependent concentration.
Format	Purified polyclonal antibody supplied in PBS with 0.09% (W/V) sodium azide. This antibody is purified through a protein A column, followed by peptide affinity purification.
Storage	Maintain refrigerated at 2-8°C for up to 2 weeks. For long term storage store at -20°C in small aliquots to prevent freeze-thaw cycles.
Precautions	SLC45A3 Antibody (Center) is for research use only and not for use in diagnostic or therapeutic procedures.

Protein Information

Name	SLC45A3 (HGNC:8642)
Synonyms	PCANAP6, PRST
Function	Proton-associated sucrose transporter. May be able to transport also

glucose and fructose.

Cellular Location

Membrane; Multi-pass membrane protein

Tissue Location

Prostate specific. Expressed in all prostatic glandular cells. Expressed both in normal and cancerous prostates

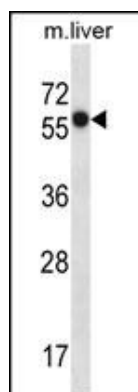
Background

Belongs to the glycoside-pentoside-hexuronide (GPH) cation symporter transporter (TC 2.A.2) family.

References

Esgueva, R., et al. Mod. Pathol. 23(4):539-546(2010)
Satake, W., et al. Nat. Genet. 41(12):1303-1307(2009)
Pflueger, D., et al. Neoplasia 11(8):804-811(2009)
Maher, C.A., et al. Nature 458(7234):97-101(2009)
Musiyyenko, A., et al. J. Mol. Med. 86(3):313-322(2008)

Images



SLC45A3 Antibody (Center) (Cat. #AP14808c) western blot analysis in mouse liver tissue lysates (35ug/lane). This demonstrates the SLC45A3 antibody detected the SLC45A3 protein (arrow).

Please note: All products are 'FOR RESEARCH USE ONLY. NOT FOR USE IN DIAGNOSTIC OR THERAPEUTIC PROCEDURES'.