

# PCSK6 Antibody (C-term)

Affinity Purified Rabbit Polyclonal Antibody (Pab)

Catalog # AP14833b

## Product Information

---

<b>Application</b>	WB, E
<b>Primary Accession</b>	<a href="#">P29122</a>
<b>Other Accession</b>	<a href="#">NP_612197.1</a> , <a href="#">NP_612194.1</a> , <a href="#">NP_612196.1</a>
<b>Reactivity</b>	Human
<b>Host</b>	Rabbit
<b>Clonality</b>	Polyclonal
<b>Isotype</b>	Rabbit IgG
<b>Clone Names</b>	RB34608
<b>Calculated MW</b>	106420
<b>Antigen Region</b>	659-688

## Additional Information

---

<b>Gene ID</b>	5046
<b>Other Names</b>	Proprotein convertase subtilisin/kexin type 6, 3421-, Paired basic amino acid cleaving enzyme 4, Subtilisin-like proprotein convertase 4, SPC4, Subtilisin/kexin-like protease PACE4, PCSK6, PACE4
<b>Target/Specificity</b>	This PCSK6 antibody is generated from rabbits immunized with a KLH conjugated synthetic peptide between 659-688 amino acids from the C-terminal region of human PCSK6.
<b>Dilution</b>	WB~~1:1000 E~~Use at an assay dependent concentration.
<b>Format</b>	Purified polyclonal antibody supplied in PBS with 0.09% (W/V) sodium azide. This antibody is purified through a protein A column, followed by peptide affinity purification.
<b>Storage</b>	Maintain refrigerated at 2-8°C for up to 2 weeks. For long term storage store at -20°C in small aliquots to prevent freeze-thaw cycles.
<b>Precautions</b>	PCSK6 Antibody (C-term) is for research use only and not for use in diagnostic or therapeutic procedures.

## Protein Information

---

<b>Name</b>	PCSK6
<b>Synonyms</b>	PACE4

<b>Function</b>	Serine endoprotease that processes various proproteins by cleavage at paired basic amino acids, recognizing the RXXX[KR]R consensus motif. Likely functions in the constitutive secretory pathway, with unique restricted distribution in both neuroendocrine and non-neuroendocrine tissues.
<b>Cellular Location</b>	[Isoform PACE4A-I]: Secreted. [Isoform PACE4C]: Endoplasmic reticulum. Note=Not secreted, remains probably in zymogen form in endoplasmic reticulum [Isoform PACE4E-I]: Endomembrane system; Peripheral membrane protein. Note=Retained intracellularly probably through a hydrophobic cluster in their C-terminus [Isoform PACE4B]: Secreted.
<b>Tissue Location</b>	Each PACE4 isoform exhibits a unique restricted distribution. Isoform PACE4A-I is expressed in heart, brain, placenta, lung, skeletal muscle, kidney, pancreas, but at comparatively higher levels in the liver. Isoform PACE4A-II is at least expressed in placenta. Isoform PACE4B was only found in the embryonic kidney cell line from which it was isolated. Isoform PACE4C and isoform PACE4D are expressed in placenta. Isoform PACE4E-I is expressed in cerebellum, placenta and pituitary. Isoform PACE4E-II is at least present in cerebellum

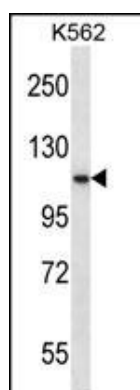
## Background

The protein encoded by this gene belongs to the subtilisin-like proprotein convertase family. The members of this family are proprotein convertases that process latent precursor proteins into their biologically active products. This encoded protein is a calcium-dependent serine endoprotease that can cleave precursor protein at their paired basic amino acid processing sites. Some of its substrates are - transforming growth factor beta related proteins, proalbumin, and von Willebrand factor. This gene is thought to play a role in tumor progression. Alternatively spliced transcript variants encoding different isoforms have been identified.

## References

Bailey, S.D., et al. Diabetes Care 33(10):2250-2253(2010)  
 Rose, J.E., et al. Mol. Med. 16 (7-8), 247-253 (2010) :  
 Fuller, J.A., et al. Invest. Ophthalmol. Vis. Sci. 50(12):5759-5768(2009)  
 Talmud, P.J., et al. Am. J. Hum. Genet. 85(5):628-642(2009)  
 Blanchet, M.H., et al. EMBO J. 27(19):2580-2591(2008)

## Images



PCSK6 Antibody (C-term) (Cat. #AP14833b) western blot analysis in K562 cell line lysates (35ug/lane). This demonstrates the PCSK6 antibody detected the PCSK6 protein (arrow).