

TCF12 Antibody (N-term)

Affinity Purified Rabbit Polyclonal Antibody (Pab)

Catalog # AP14835a

Product Information

Application	WB, E
Primary Accession	Q99081
Other Accession	P51514 , Q61286 , NP_996923.1 , NP_996919.1
Reactivity	Human, Rat, Mouse
Predicted	Mouse, Rat
Host	Rabbit
Clonality	Polyclonal
Isotype	Rabbit IgG
Calculated MW	72965
Antigen Region	55-84

Additional Information

Gene ID	6938
Other Names	Transcription factor 12, TCF-12, Class B basic helix-loop-helix protein 20, bHLHb20, DNA-binding protein HTF4, E-box-binding protein, Transcription factor HTF-4, TCF12, BHLHB20, HEB, HTF4
Target/Specificity	This TCF12 antibody is generated from rabbits immunized with a KLH conjugated synthetic peptide between 55-84 amino acids from the N-terminal region of human TCF12.
Dilution	WB~~1:1000 E~~Use at an assay dependent concentration.
Format	Purified polyclonal antibody supplied in PBS with 0.09% (W/V) sodium azide. This antibody is purified through a protein A column, followed by peptide affinity purification.
Storage	Maintain refrigerated at 2-8°C for up to 2 weeks. For long term storage store at -20°C in small aliquots to prevent freeze-thaw cycles.
Precautions	TCF12 Antibody (N-term) is for research use only and not for use in diagnostic or therapeutic procedures.

Protein Information

Name	TCF12
Synonyms	BHLHB20, HEB, HTF4

Function	Transcriptional regulator. Involved in the initiation of neuronal differentiation. Activates transcription by binding to the E box (5'-CANNTG-3') (By similarity). May be involved in the functional network that regulates the development of the GnRH axis (PubMed: 32620954).
Cellular Location	Nucleus.
Tissue Location	Expressed in several tissues and cell types including skeletal muscle, thymus, and a B-cell line

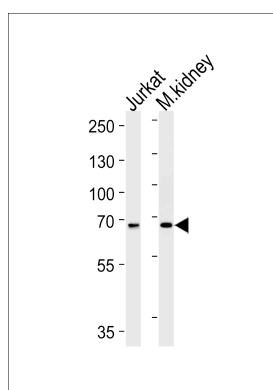
Background

The protein encoded by this gene is a member of the basic helix-loop-helix (bHLH) E-protein family that recognizes the consensus binding site (E-box) CANNTG. This encoded protein is expressed in many tissues, among them skeletal muscle, thymus, B- and T-cells, and may participate in regulating lineage-specific gene expression through the formation of heterodimers with other bHLH E-proteins. Several alternatively spliced transcript variants of this gene have been described, but the full-length nature of some of these variants has not been determined. [provided by RefSeq].

References

Schotte, R., et al. J. Immunol. 184(12):6670-6679(2010)
 Rose, J. Phd, et al. Mol. Med. (2010) In press :
 Landa, I., et al. PLoS Genet. 5 (9), E1000637 (2009) :
 Gardini, A., et al. PLoS Genet. 4 (11), E1000275 (2008) :
 Kumar, R., et al. J. Biol. Chem. 283(27):19026-19038(2008)

Images



TCF12 Antibody (N-term) (Cat. #AP14835a) western blot analysis in Jurkat cell line and mouse kidney lysates (35ug/lane). This demonstrates the TCF12 antibody detected the TCF12 protein (arrow).

Please note: All products are 'FOR RESEARCH USE ONLY. NOT FOR USE IN DIAGNOSTIC OR THERAPEUTIC PROCEDURES'.