

BEND4 Antibody (N-term)

Affinity Purified Rabbit Polyclonal Antibody (Pab)

Catalog # AP14883a

Product Information

Application	WB, FC, E
Primary Accession	Q6ZU67
Other Accession	NP_997289.2 , NP_001153019.1
Reactivity	Human
Host	Rabbit
Clonality	Polyclonal
Isotype	Rabbit IgG
Clone Names	RB35177
Calculated MW	58375
Antigen Region	16-44

Additional Information

Gene ID	389206
Other Names	BEN domain-containing protein 4, Coiled-coil domain-containing protein 4, BEND4, CCDC4
Target/Specificity	This BEND4 antibody is generated from rabbits immunized with a KLH conjugated synthetic peptide between 16-44 amino acids from the N-terminal region of human BEND4.
Dilution	WB~~1:1000 FC~~1:10~50 E~~Use at an assay dependent concentration.
Format	Purified polyclonal antibody supplied in PBS with 0.09% (W/V) sodium azide. This antibody is purified through a protein A column, followed by peptide affinity purification.
Storage	Maintain refrigerated at 2-8°C for up to 2 weeks. For long term storage store at -20°C in small aliquots to prevent freeze-thaw cycles.
Precautions	BEND4 Antibody (N-term) is for research use only and not for use in diagnostic or therapeutic procedures.

Protein Information

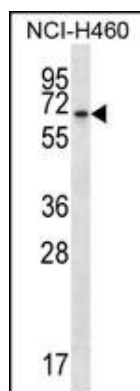
Name	BEND4
Synonyms	CCDC4

References

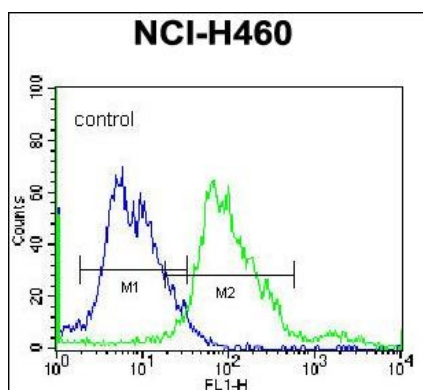
Matsuoka, S., et al. Science 316(5828):1160-1166(2007)

Strausberg, R.L., et al. Proc. Natl. Acad. Sci. U.S.A. 99(26):16899-16903(2002)

Images



BEND4 Antibody (N-term) (Cat. #AP14883a) western blot analysis in NCI-H460 cell line lysates (35ug/lane). This demonstrates the BEND4 antibody detected the BEND4 protein (arrow).



BEND4 Antibody (N-term) (Cat. #AP14883a) flow cytometric analysis of NCI-H460 cells (right histogram) compared to a negative control cell (left histogram). FITC-conjugated donkey-anti-rabbit secondary antibodies were used for the analysis.

Please note: All products are 'FOR RESEARCH USE ONLY. NOT FOR USE IN DIAGNOSTIC OR THERAPEUTIC PROCEDURES'.