

TSPY Antibody (C-term)

Affinity Purified Rabbit Polyclonal Antibody (Pab)

Catalog # AP14884b

Product Information

Application	WB, IHC-P, E
Primary Accession	Q01534
Other Accession	P0CW01 , P0CW00 , P0CV99 , P0CV98 , A6NKD2 , NP_001071165.2 , XP_002344239.1
Reactivity	Human
Host	Rabbit
Clonality	Polyclonal
Isotype	Rabbit IgG
Clone Names	RB35184
Calculated MW	35012
Antigen Region	274-303

Additional Information

Gene ID	100289087;7258;728137
Other Names	Testis-specific Y-encoded protein 1, Cancer/testis antigen 78, CT78, TSPY1, TSPY
Target/Specificity	This TSPY antibody is generated from rabbits immunized with a KLH conjugated synthetic peptide between 274-303 amino acids from the C-terminal region of human TSPY.
Dilution	WB~~1:1000 IHC-P~~1:100~500 E~~Use at an assay dependent concentration.
Format	Purified polyclonal antibody supplied in PBS with 0.09% (W/V) sodium azide. This antibody is purified through a protein A column, followed by peptide affinity purification.
Storage	Maintain refrigerated at 2-8°C for up to 2 weeks. For long term storage store at -20°C in small aliquots to prevent freeze-thaw cycles.
Precautions	TSPY Antibody (C-term) is for research use only and not for use in diagnostic or therapeutic procedures.

Protein Information

Name	TSPY1
Synonyms	TSPY

Function	May be involved in sperm differentiation and proliferation.
Cellular Location	Cytoplasm. Nucleus. Note=Predominantly cytoplasmic. Also found in nucleus
Tissue Location	Specifically expressed in testicular tissues. Isoform 1 and isoform 2 are expressed in spermatogonia and spermatocytes. Found in early testicular carcinoma in situ, spermatogonial cells in testicular tissues of 46,X,Y female and in prostate cancer cell lines.

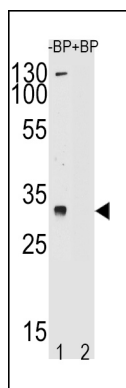
Background

TSPY may be involved in sperm differentiation and proliferation.

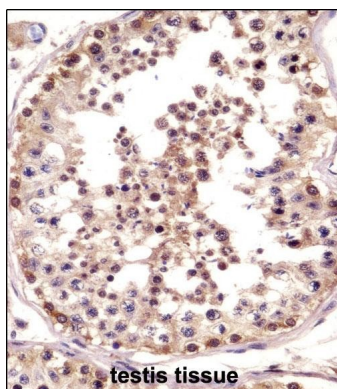
References

Kimura, K., et al. Genome Res. 16(1):55-65(2006)
Strausberg, R.L., et al. Proc. Natl. Acad. Sci. U.S.A. 99(26):16899-16903(2002)

Images



Western blot analysis of TSPY Antibody (C-term) (Cat. #AP14884b) pre-incubated without(lane 1) and with(lane 2) blocking peptide in LNCAP cell line lysate. TSPY Antibody (C-term) (arrow) was detected using the purified Pab.



TSPY Antibody (C-term) (AP14884b)immunohistochemistry analysis in formalin fixed and paraffin embedded human testis tissue followed by peroxidase conjugation of the secondary antibody and DAB staining.This data demonstrates the use of TSPY Antibody (C-term) for immunohistochemistry. Clinical relevance has not been evaluated.

Please note: All products are 'FOR RESEARCH USE ONLY. NOT FOR USE IN DIAGNOSTIC OR THERAPEUTIC PROCEDURES'.