

EIF1B Antibody (C-term)

Affinity Purified Rabbit Polyclonal Antibody (Pab)

Catalog # AP14888b

Product Information

Application	WB, E
Primary Accession	O60739
Other Accession	P61220 , Q9CXU9 , Q4R4X9 , NP_005866.1
Reactivity	Human
Predicted	Monkey, Mouse, Pig
Host	Rabbit
Clonality	Polyclonal
Isotype	Rabbit IgG
Clone Names	RB35202
Calculated MW	12824
Antigen Region	84-113

Additional Information

Gene ID	10289
Other Names	Eukaryotic translation initiation factor 1b, eIF1b, Protein translation factor SUI1 homolog GC20, EIF1B
Target/Specificity	This EIF1B antibody is generated from rabbits immunized with a KLH conjugated synthetic peptide between 84-113 amino acids from the C-terminal region of human EIF1B.
Dilution	WB~~1:1000 E~~Use at an assay dependent concentration.
Format	Purified polyclonal antibody supplied in PBS with 0.09% (W/V) sodium azide. This antibody is purified through a protein A column, followed by peptide affinity purification.
Storage	Maintain refrigerated at 2-8°C for up to 2 weeks. For long term storage store at -20°C in small aliquots to prevent freeze-thaw cycles.
Precautions	EIF1B Antibody (C-term) is for research use only and not for use in diagnostic or therapeutic procedures.

Protein Information

Name	EIF1B
Function	Probably involved in translation.

Background

EIF1B is probably involved in translation.

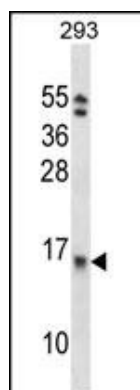
References

Ewing, R.M., et al. Mol. Syst. Biol. 3, 89 (2007) :

Hu, R.M., et al. Proc. Natl. Acad. Sci. U.S.A. 97(17):9543-9548(2000)

Fields, C., et al. Biochem. Biophys. Res. Commun. 198(1):288-291(1994)

Images



EIF1B Antibody (C-term) (Cat. #AP14888b) western blot analysis in 293 cell line lysates (35ug/lane). This demonstrates the EIF1B antibody detected the EIF1B protein (arrow).

Please note: All products are 'FOR RESEARCH USE ONLY. NOT FOR USE IN DIAGNOSTIC OR THERAPEUTIC PROCEDURES'.